

# Solenoid Valves for Automation

3/2 way - Normally Closed - Direct operated

Fittings: G = 1/8"



## General description:

PARKER series 179 solenoid valves have direct action and are used in systems for pressurisation and automatic discharge of media when small overall dimensions and low electric absorption are required. They are suitable for general applications with media such as **water, air, light oils (2°E) and inert gases**, provided they are compatible with the construction materials used.

Series 179 valves are **normally closed**. For large orders, valves are available on request with **manual operator**.

## Coils:

For series 179 valves the WB class "F" coil (155°C), encapsulated in thermoplastic containing 30% glass fiber, is used.

The coil is for continuous service, 100% E.D.

The rated voltage tolerance is: **±10% for A.C.** power supply and **+10% -5% for D.C.**

The "W" coil can be used on a.c. with frequency of 50/60Hz (dualfrequency) and has Faston terminals for **DIN 43650B** connector with protection to **IP65**.

## Series 179

## Temperatures:

The working temperature for media is:

maximum **+140°C**  
minimum **-10°C**

The maximum ambient temperature is: **+50°C**

## Materials:

- Valve body: OT58 UNI 5705 brass stamping
- Seals: Viton
- Enclosing tube: AISI 304 stainless steel
- Plunger: AISI 430 F stainless steel
- Spring: AISI 302 stainless steel
- Shading ring: Copper

## Electrical features:

Coil type [ ]		Power [W]		Insulat. class
A.C.(~)	D.C.(=)	A.C.(~)	D.C.(=)	
WB 4.5	WB 5.0	4.5	5.0	F

## Specification:

Fittings Ø G	Valve type	Nominal orifice Ø	Flow coefficient Kv	Minimum pressure	Max. differential pressure (M.O.P.D.)		Coil type	Weight	Notes
					in A.C.(~) bar	in D.C.(=) bar			
[ " ]	[ ]	[mm]	[m³/h]	[bar]			[ ]	[Kg]	[ ]
1/8	179 I	1.2 (1.6)*	0.04	0	10	10	W	0.14	1
1/8	179 A	1.5 (1.6)*	0.05	0	7	7	W	0.14	1

Note: 1) NP (nominal pressure): 25 bar.  
2) \* Discharge diameter.



## Application:

Series 179 solenoid valves are ideal for automatic control of media where low flow rates are required.

Some typical application examples:

- Exhaust gas analysers;
- Sterilisers;
- Scientific equipment;
- Electrical medical equipment;
- Automatic dispensers;
- Pilot valves.

## Installation:

The valves can be mounted in any position without jeopardising their operation. It is however advisable to install them with the coil in a vertical position above the body.

## Approvals:



•Coil certification:

**WB 4,5** 115V/50-60Hz, 220-230V/50-60Hz



•For the coil:

**WB 4,5** 115V/50-60Hz, 220-230V/50-60Hz



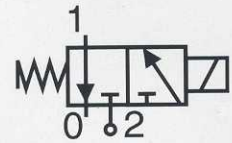
•UL Recognized Comp. Mark for the coil:

**WB 4,5** 24V/60Hz, 110-120V/60Hz, 208-240V/60Hz

## Special versions

On request and for large orders, the series 179 valves can be fitted with quick action coupling fittings such as **Prestolock** cartridge.

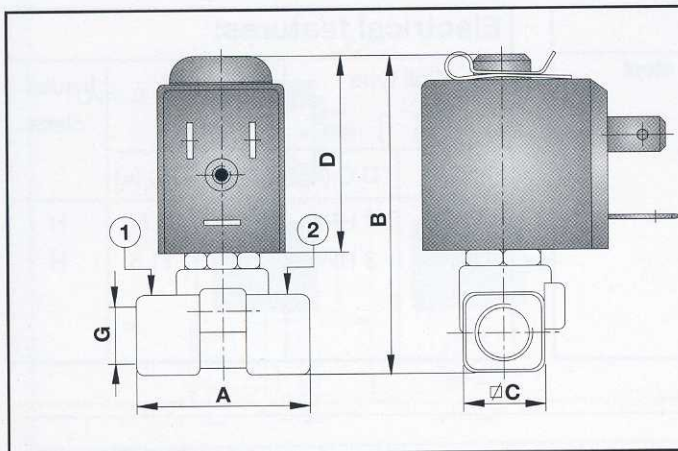
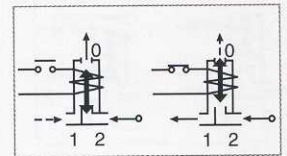
## Series 179



**N.C.**

**Normally closed**

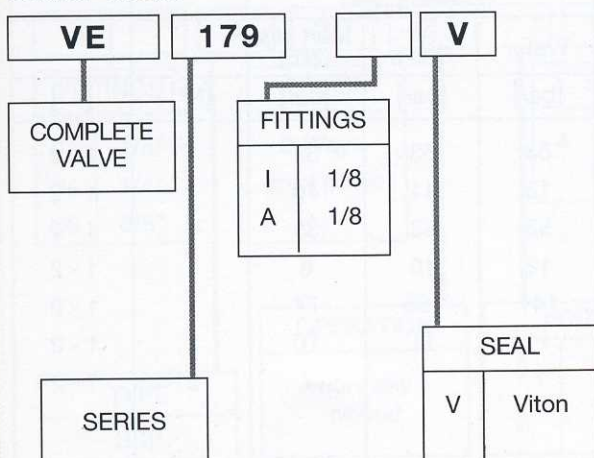
Coil energised - open  
Coil de-energised - closed



## Dimensions

Fittings Ø G	A	B	C	D
[ " ]	[mm]	[mm]	[mm]	[mm]
1/8	30	56	14	35

## Order code



Coil type	[V] [Hz]/c.c.					
	24 V 50/60 Hz	115 V 50/60 Hz	220-230 V 50/60 Hz	240 V 50/60 Hz	12 V c.c.	24 V c.c.
WB 4,5	•	•	•	•		
WB 5,0					•	•
Coil type	24 V/60 Hz	110-120 V/60 Hz	208-240 V/60 Hz			
WB 4,5	•	•	•			

Note: Valve supplied with coil in a multipack.  
Connector to be ordered separately.