



Air Clamp Cylinders

Ø 1", 2 1/4" and 3" bore single acting

Catalogue no. PDE2521TCUK-ca



Air Clamps

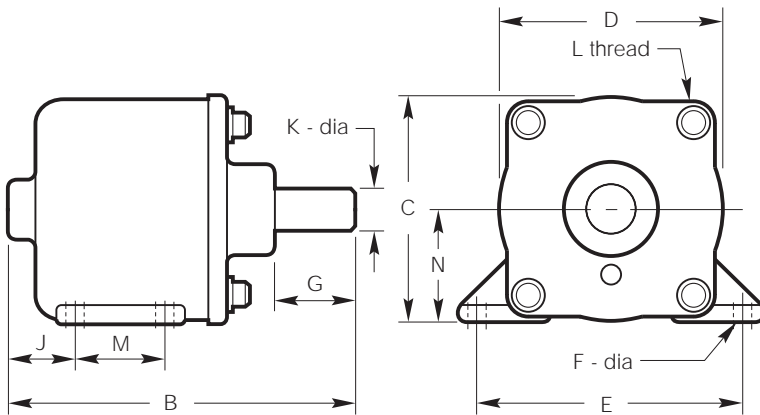
Ø 1", 2 1/4" and 3" bore

A simple, yet versatile, push type air cylinder with spring return.
Manufactured from bearing type bronze alloy which obviates the need for a separate neck bearing, these

rugged air clamps have many uses which include clamping, positioning, marking and striking - in particular their use as a clamp relieves the operator of the tiring physical work of mechanical clamp setting.

Leg mounted type

Delivering a smooth rapid push stroke parallel to the integral mounting surface.
1" bore sizes two mounting holes, larger sizes have four.



Dimensions

Bore size	Stroke	Part No	B	C	D	E crs	G	J	K dia	L	M crs	N	Port
1" / 25mm	1" / 25mm	033510099	90.9	31	30.2	41.1	18.5	33.3	7.9	2 - 10-32	-	15.7	1/8NPT
	2" / 51mm	033510199	116.3	31	30.2	41.1	18.5	58.7	7.9	2 - 10-32	-	15.7	1/8NPT
2 1/4" / 57mm	1" / 25mm	033520099	102.4	65.8	65	77.7	25.4	19.8	12.7	4 - 10-32	26.9	33.3	1/8NPT
	2" / 51mm	033520199	127.8	65.8	65	77.7	25.4	45.2	12.7	4 - 10-32	26.9	33.3	1/8NPT
3" / 76mm	1" / 25mm	033530099	118.4	88.9	84.1	85.9	27.4	22.6	15.7	6 - 1/4-28	28.4	44.4	1/8NPT
	2" / 51mm	033530199	143.8	88.9	84.1	85.9	27.4	48	15.7	6 - 1/4-28	28.4	44.4	1/8NPT

Note: The spring return is designed to move the weight of the piston and rod only.

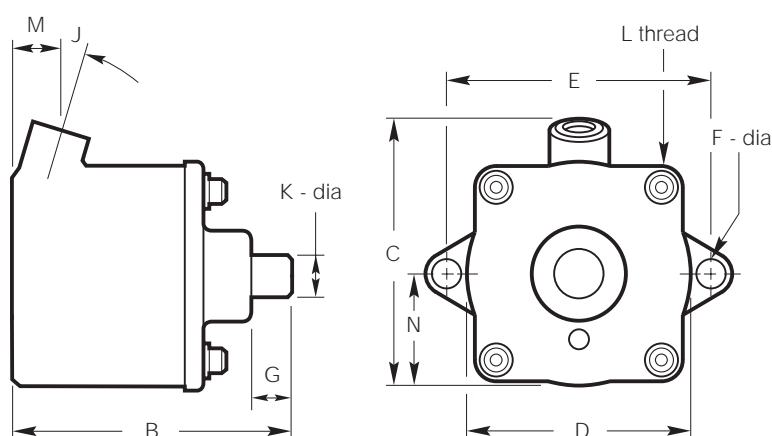
Pressure Range: 1 to 10 bar air only.

Temperature Range: -23°C to +74°C

Air Clamps are available only in stroke lengths of 1" (25mm) and 2" (51mm) in each bore size.

Base mounted type

This delivers a push stroke perpendicular to the mounting surface with the base having two integral mounting lugs on all sizes.



Dimensions

Bore size	Stroke	Part No	B	C	D	E crs	F dia	G	J	K dia	L	M	N	Port
1" / 25mm	1" / 25mm	034510099	82.6	46	30.2	41.1	5.1	18.5	17°	7.9	2 - 10-32	14.2	15	1/8NPT
	2" / 51mm	034510159	108	46	30.2	41.1	5.1	18.5	17°	7.9	2 - 10-32	14.2	15	1/8NPT
2 1/4" / 57mm	1" / 25mm	034520119	95.8	79.2	65	77.7	6.9	25.4	17°	12.7	4 - 10-32	14.2	32.5	1/8NPT
	2" / 51mm	034520179	121.2	79.2	65	77.7	6.9	25.4	17°	12.7	4 - 10-32	14.2	32.5	1/8NPT
3" / 76mm	1" / 25mm	034530129	110	100.8	84.1	101.6	8.4	27.4	17°	15.7	6 - 1/4-28	14.2	44.4	1/8NPT
	2" / 51mm	03453-0189	135.4	100.8	84.1	101.6	8.4	27.4	17°	15.7	6 - 1/4-28	14.2	44.4	1/8NPT

Note: The spring return is designed to move the weight of the piston and rod only.

Pressure Range: 0.3 to 10 bar air only.

Temperature Range: -23°C to +74°C

Air Clamps are available only in stroke lengths of 1" (25mm) and 2" (51mm) in each bore size.