



# Directional Control Valves

*G<sup>1</sup>/<sub>4</sub>, 3/2, 5/2, 3/3 and 5/3  
Spool valves*



# Directional control valves G<sup>1</sup>/<sub>4</sub>

## 3/2, 5/2, 3/3, 5/3 Spool Valves G<sup>1</sup>/<sub>4</sub> Ports

This quality and proven range of valves feature a block form zinc diecast body passivated to prevent corrosion and designed to allow complete interchangeability of actuators and return mechanisms. The stainless steel spool is sealed by synthetic viton 'O' rings, with unique seal spacers to ensure full air flow through the open ports. Non corrosive materials are used on all operating parts exposed to the working fluid.

Individual valves may be mounted in any position, the block form construction is particularly convenient for compact banking. Valves may be serviced in-situ by removal of the actuator, facilitating extraction of the spool and 'O' rings.

Tell-tale indicators on both solenoid and pilot operated valves can be used to check the position of the main spool or as a manual over-ride.

Operation of the actuator on the 5/2 valve opens the cylinder port nearest to the actuator. On the 3/2 version the inlet is piped to the port furthest away from the actuator for normally closed operation, and to the port nearest the actuator for normally open. Any of the actuators may be fitted with spring or pilot return mechanism. Valves may also be supplied with the same actuator at both ends; e.g. double roller. Roller versions are designed to give a common height on both 3/2 and 5/2 valves to ensure uniformity and efficiency in a multi-valve assembly.

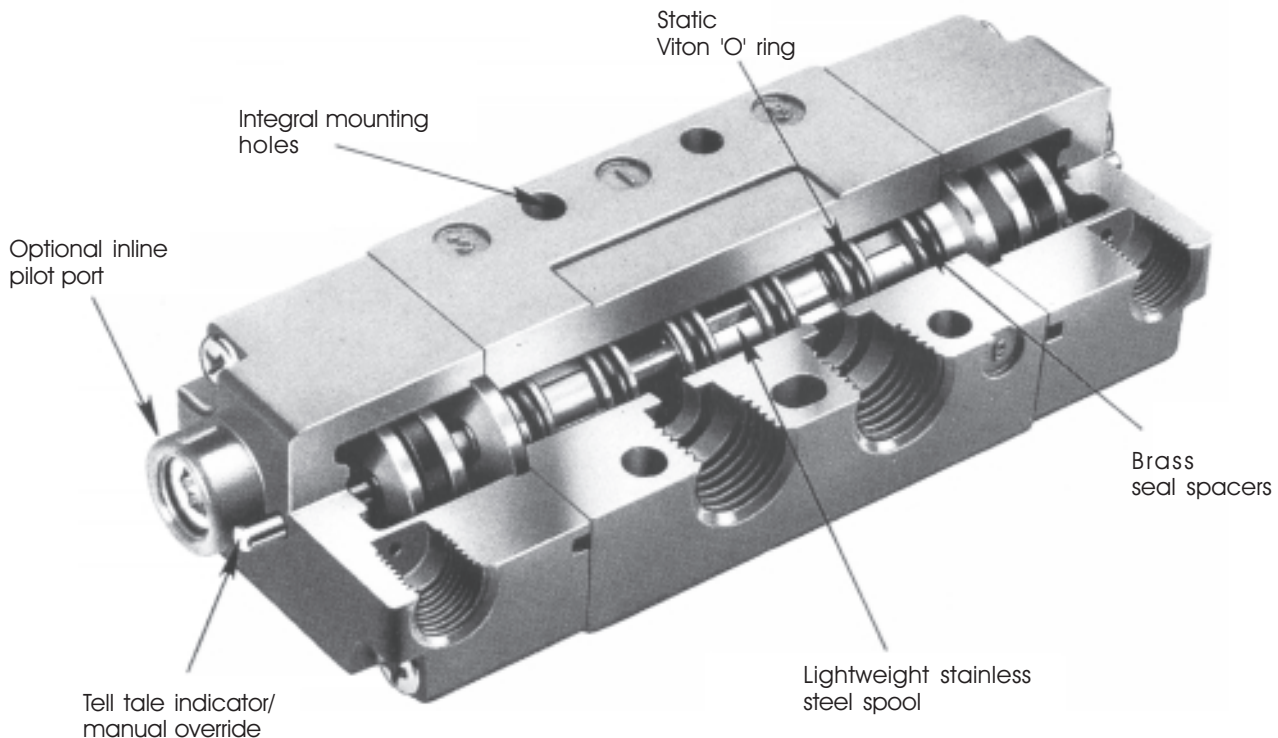
Centre position valves; either spring to centre or 3-position (detented mid-position) are available in the following configurations:

Neutral X - Spool in mid-position - all ports closed.

Negative Y - Spool in mid-position - Cylinder ports open to exhaust, inlet closed.

Positive Z - Spool in mid-position - both cylinder ports open to inlet, exhaust closed.

## Features

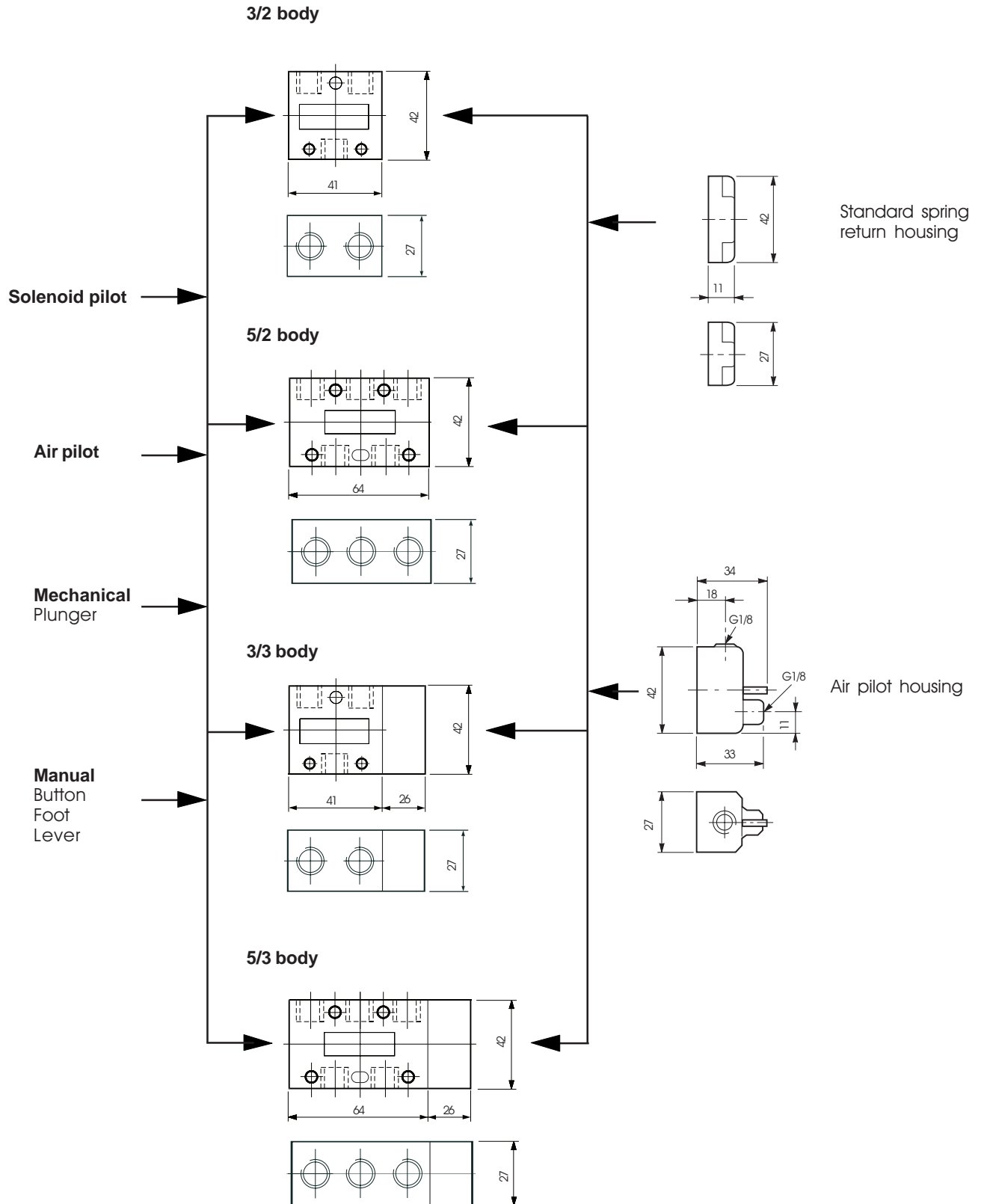


## Basic body dimensions (mm)

Actuator mechanisms

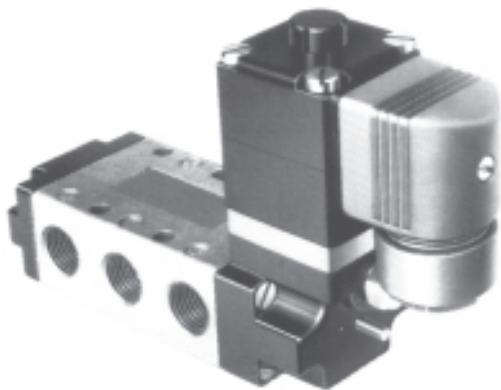
Basic bodies

Return mechanisms



# Directional control valves G<sup>1</sup>/<sub>4</sub>, 3/2 - 5/2

## Solenoid pilot operated 5 watt solenoid



## Symbol



## Materials

Body	Zinc diecast
Actuator	Zinc diecast
Spool	Stainless steel
Bushes	Brass
Seals	Viton (valve body) Nitrile (actuators)
Spring housing	Nylon (acetal resin)

## Technical information

Type	Spool valve
Style	Body ported
Port size	G <sup>1</sup> / <sub>4</sub>
Mounting	Any plane
Temperature range	-10°C to +55°C

## Pneumatic information

Pressure range	0 to 10 bar
Minimum pilot pressure	2,7 bar
Nominal Ø	7mm
Nominal flow at 7 bar	26 dm <sup>3</sup> /s

## Electrical information

Power consumption	Inrush	Hold
AC	14VA	9VA
DC	5 Watt	
Rating	100% ED	
Isolating class	F	
Protection class	IP 65 (P 54) DIN 40 050	
Connection	DIN 43 650 Form B	

## Voltage selection

Suffix	50 Hz	D.C.
T	10-13	5-6.5
TA	2-26	10-13
TF	44-55	21-26
TC	85-110	43-55
S	94-121	54-69
TS	153-242	94-121
SA	204-264	102-132

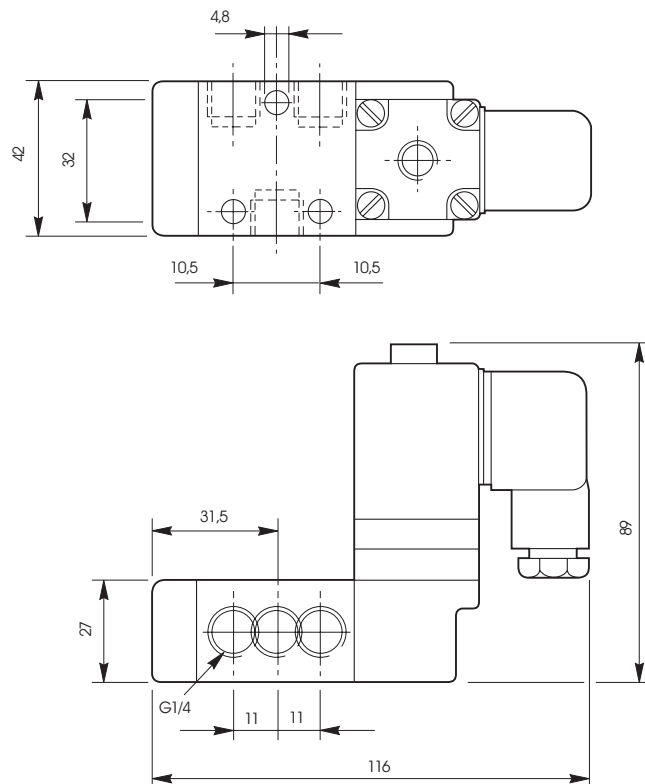
## Ordering information

Part nos.	Type	Actuator	Return	Symbol
<b>LB53013*</b>	3/2	Solenoid pilot	Spring	
<b>LB53014*</b>	5/2	Solenoid pilot	Spring	

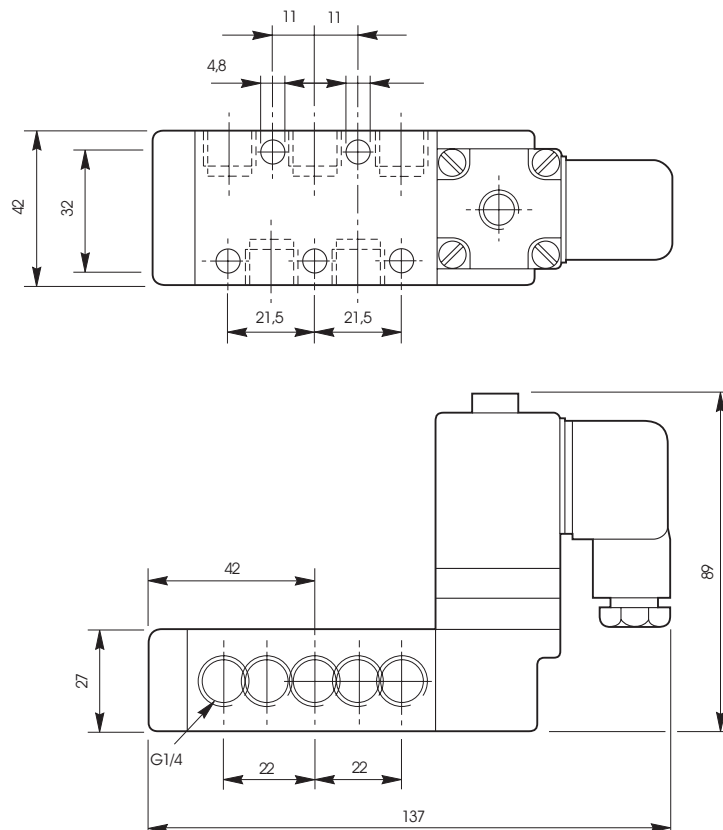
\*Specify voltage and add suffix letters  
For manual override add suffix M.

# Directional control valves G<sup>1</sup>/<sub>4</sub>, 3/2 - 5/2

## 3/2 valve dimensions (mm)



## 5/2 valve dimensions (mm)



# Directional control valves G<sup>1</sup>/<sub>4</sub>, 3/2 - 5/2

## Solenoid pilot operated 5 watt solenoid



## Symbol



## Materials

Body	Aluminium
Actuator	Zinc diecast
Spool	Stainless steel
Bushes	Brass
Seals	Viton (valve body) Nitrile (actuators)

## Technical information

Type	Spool valve
Style	Body ported
Port size	G <sup>1</sup> / <sub>4</sub>
Mounting	Any plane
Temperature range	-10°C to +55°C

## Pneumatic information

Pressure range	0 to 10 bar
Minimum pilot pressure	2,7 bar
Nominal Ø	7mm
Nominal flow at 7 bar	26 dm <sup>3</sup> /s

## Electrical information

Power consumption	Inrush	Hold
AC	14VA	9VA
DC	5 Watt	
Rating	100% ED	
Isolating class	F	
Protection class	IP 65 (P 54) DIN 40 050	
Connection	DIN 43 650 Form B	

## Voltage selection

Suffix	50 Hz	D.C.
T	10-13	5-6.5
TA	2-26	10-13
TF	44-55	21-26
TC	85-110	43-55
S	94-121	54-69
TS	153-242	94-121
SA	204-264	102-132

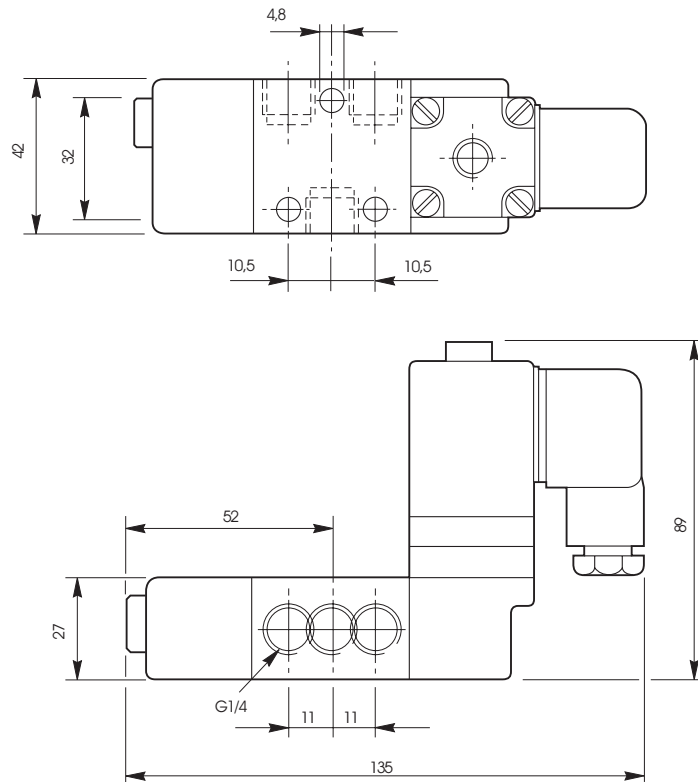
## Ordering information

Part nos.	Type	Actuator	Return	Symbol
<b>LB53033*</b>	3/2	Solenoid pilot	Air pilot	
<b>LB53034*</b>	5/2	Solenoid pilot	Air pilot	

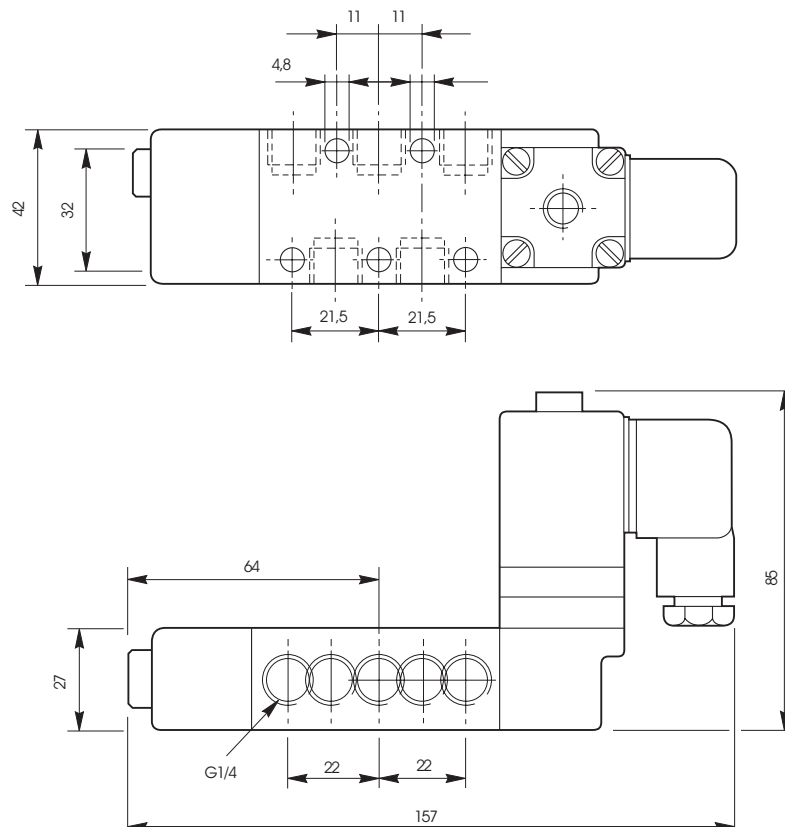
\*Specify voltage and add suffix letters  
For manual override add suffix M.

# Directional control valves G<sup>1</sup>/<sub>4</sub>, 3/2 - 5/2

## 3/2 valve dimensions (mm)

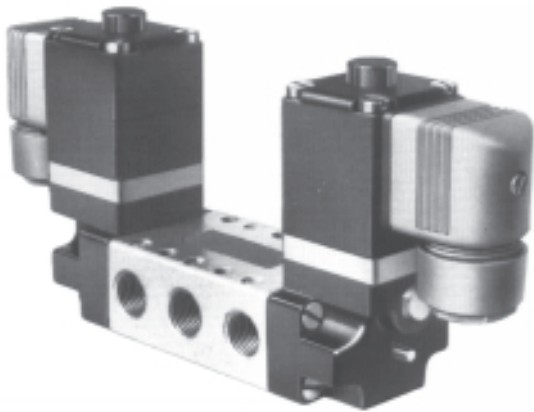


## 5/2 valve dimensions (mm)



# Directional control valves G<sup>1</sup>/<sub>4</sub>, 3/2 - 5/2

## Solenoid pilot operated 5 watt solenoid



## Symbol



## Materials

Body	Zinc diecast
Actuator	Zinc diecast
Spool	Stainless steel
Bushes	Brass
Seals	Viton (valve body) Nitrile (actuators)

## Technical information

Type	Spool valve
Style	Body ported
Port size	G <sup>1</sup> / <sub>4</sub>
Mounting	Any plane
Temperature range	-10°C to +55°C

## Pneumatic information

Pressure range	0 to 10 bar
Minimum	Spring return 2,7 bar
Nominal Ø	7mm
Nominal flow at 7 bar	26 dm <sup>3</sup> /s

## Electrical information

Power consumption	Inrush	Hold
AC	14VA	9VA
DC	5 Watt	
Rating	100% ED	
Isolating class	F	
Protection class	IP 65 (P 54) DIN 40 050	
Connection	DIN 43 650 Form B	

## Voltage selection

Suffix	50 Hz	D.C.
T	10-13	5-6.5
TA	2-26	10-13
TF	44-55	21-26
TC	85-110	43-55
S	94-121	54-69
TS	153-242	94-121
SA	204-264	102-132

## Ordering information

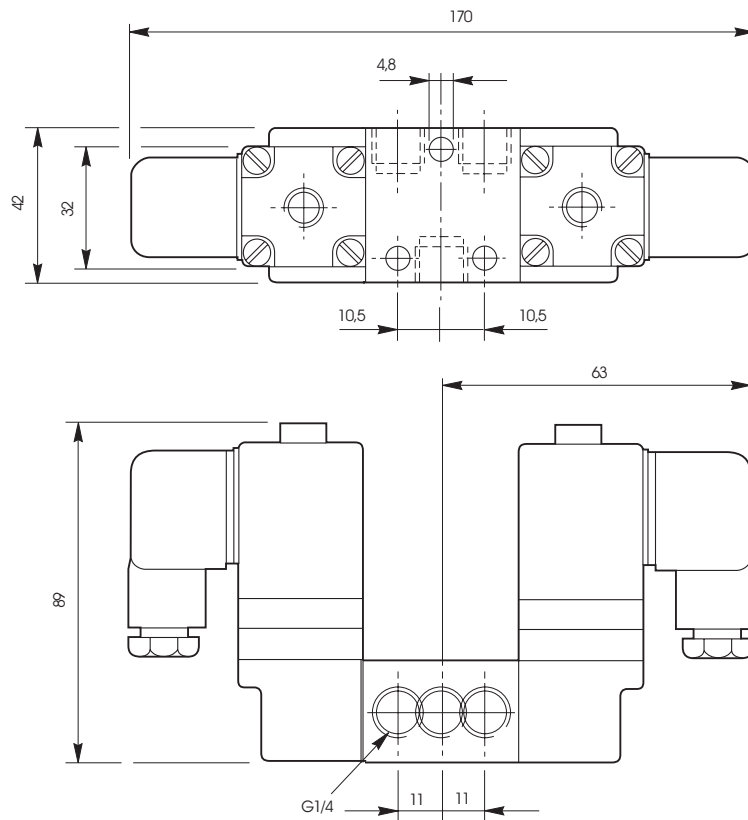
Part nos.	Type	Actuator	Return	Symbol
<b>LB53033*</b>	3/2	Solenoid pilot	Air pilot	
<b>LB53034*</b>	5/2	Solenoid pilot	Air pilot	

\*Specify voltage and add suffix letters  
For manual override add suffix M.

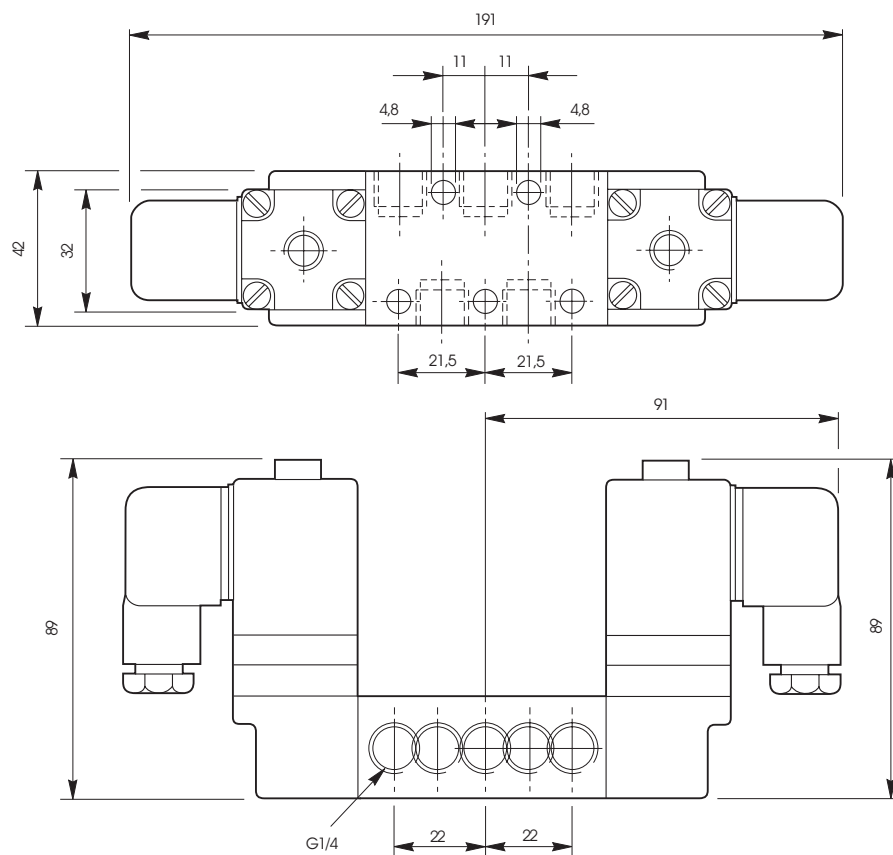


# Directional control valves G<sup>1</sup>/<sub>4</sub>, 3/2 - 5/2

## 3/2 valve dimensions (mm)

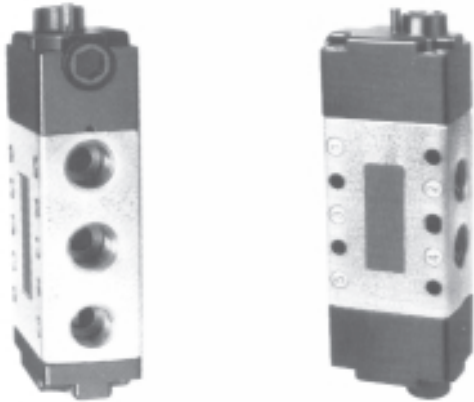


## 5/2 valve dimensions (mm)

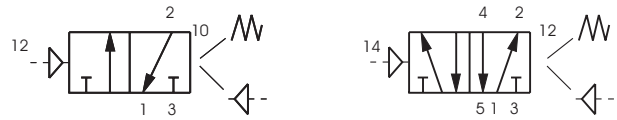


# Directional control valves G<sup>1</sup>/<sub>4</sub>, 3/2 - 5/2

## Air pilot operated valves



## Symbol



## Materials

Body	Zinc diecast
Actuator	Zinc diecast
Spool	Stainless steel
Bushes	Brass
Seals	Viton (valve body) Nitrile (actuators)
Spring housing	Nylon (acetal resin)

## Technical information

Type	Spool valve
Style	Body ported
Port size	G <sup>1</sup> / <sub>4</sub>
Mounting	Any plane
Temperature range	-10°C to +80°C

## Pneumatic information

Pressure range	0 to 10 bar
Minimum pilot pressure	Spring return 2,7 bar Air pilot return 1,3 bar
Nominal Ø	7mm
Nominal flow at 7 bar	26 dm <sup>3</sup> /s

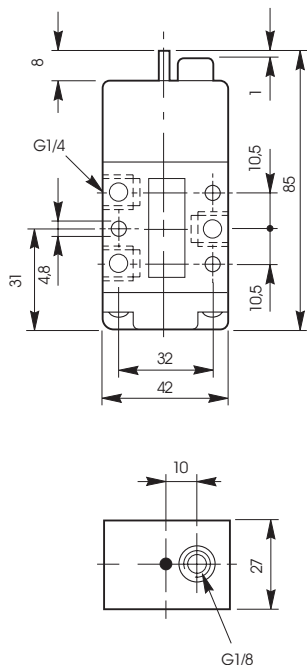
## Ordering information

Part nos.	Type	Actuator	Return	Symbol
<b>B53003PS</b>	3/2	Air pilot	Spring	
<b>B53004PS</b>	5/2	Air pilot	Spring	
<b>B53003PP</b>	3/2	Air pilot	Air pilot	
<b>B53004PP</b>	5/2	Air pilot	Air pilot	
<b>B53003J</b>	3/2	Air pilot	Differential pilot	
<b>B53004J</b>	5/2	Air pilot	Differential pilot	

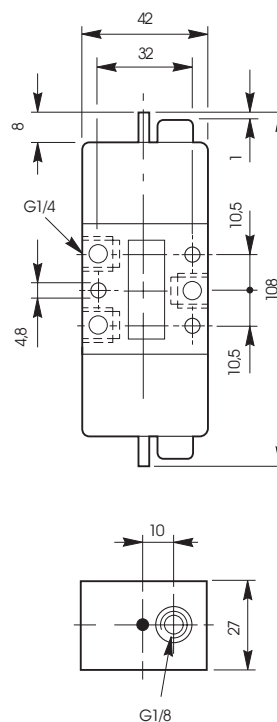
# Directional control valves G<sup>1</sup>/<sub>4</sub>, 3/2 - 5/2

## 3/2 valve dimensions (mm)

Air pilot operated  
spring return

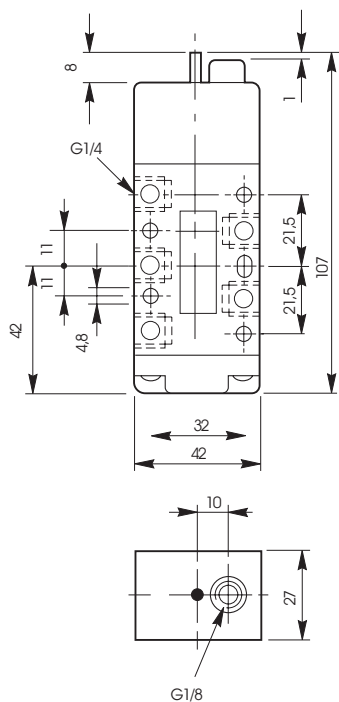


Double air pilot operated

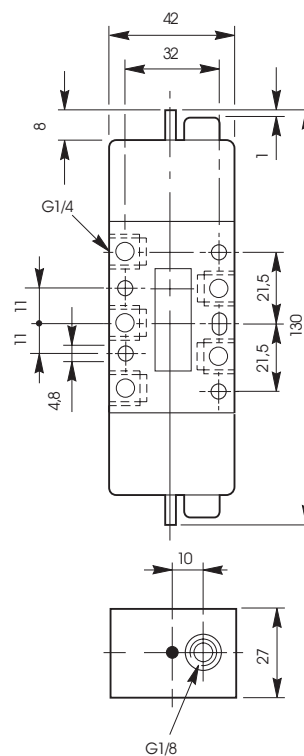


## 5/2 valve dimensions (mm)

Air pilot operated  
spring return



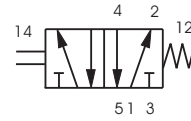
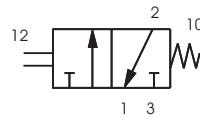
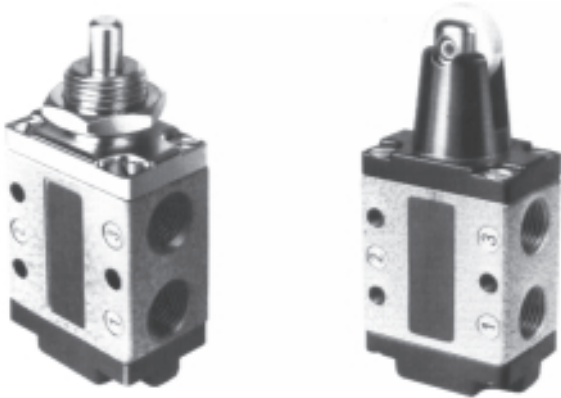
Double air pilot operated



# Directional control valves G<sup>1</sup>/<sub>4</sub>, 3/2 - 5/2

## Mechanically operated valves

## Symbol



## Materials

Body	Zinc diecast
Actuator	Zinc diecast
Spool	Stainless steel
Bushes	Brass
Seals	Viton (valve body) Nitrile (actuators)
Spring housing	Nylon (acetal resin)

## Technical information

Type	Spool valve
Style	Body ported
Port size	G <sup>1</sup> / <sub>4</sub>
Mounting	Any plane
Temperature range	-10°C to +80°C

## Pneumatic information

Pressure range	0 to 10 bar
Nominal Ø	7mm
Nominal flow at 7 bar	26 dm <sup>3</sup> /s

## Ordering information

Part nos.	Type	Actuator	Return	Symbol	Optional air pilot return
<b>B53003CS</b>	3/2	Plunger	Spring		
<b>B53004CS</b>	5/2	Plunger	Spring		
<b>B53003RS</b>	3/2	Roller	Spring		
<b>B53004RS</b>	5/2	Roller	Spring		

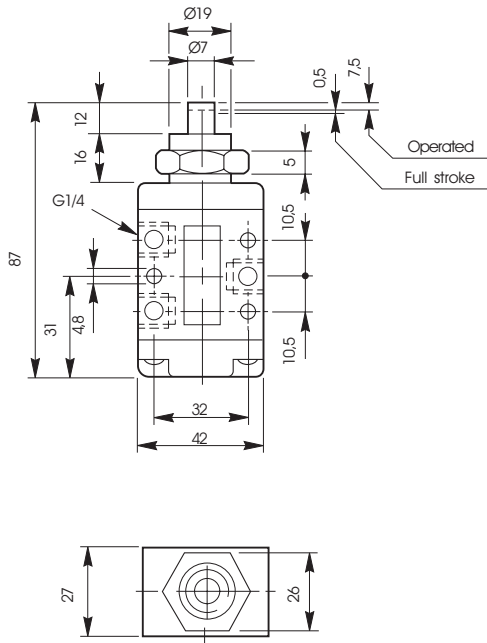
**Note:** All valves featured on this page are available with air pilot return mechanisms. To order delete 'S' for spring and add 'P' e.g. **B53003CP**.

For dimensions of air pilot housing see page

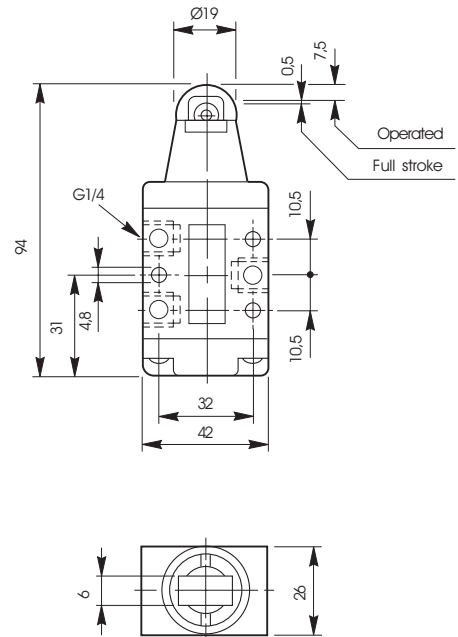
# Directional control valves G<sup>1</sup>/<sub>4</sub>, 3/2 - 5/2

## 3/2 valve dimensions (mm)

### Plunger operated spring return

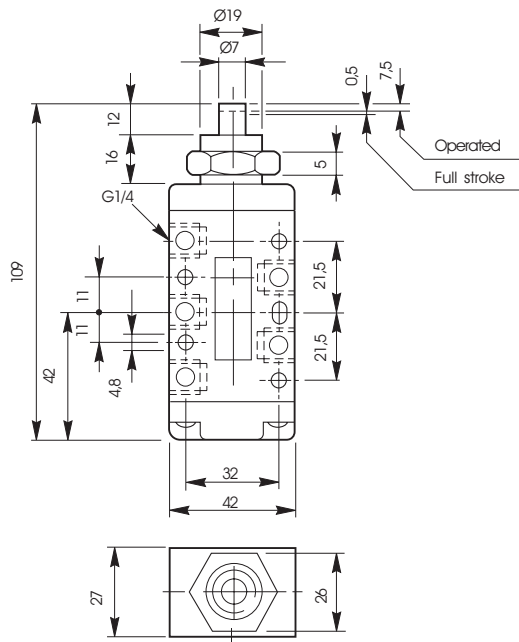


### Roller operated

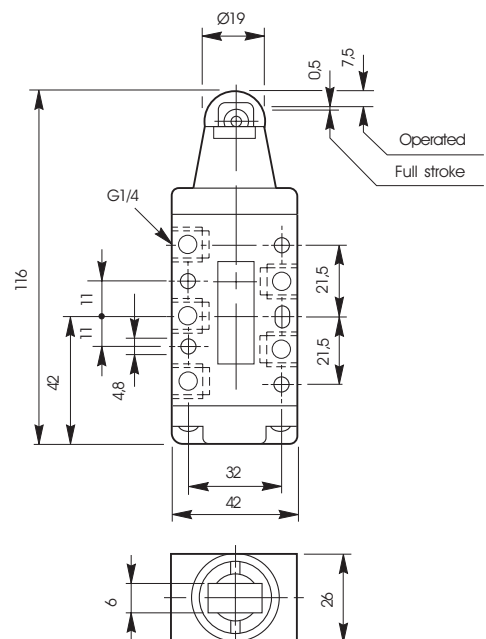


## 5/2 valve dimensions (mm)

### Plunger operated spring return



### Roller operated



# Directional control valves G<sup>1</sup>/<sub>4</sub>, 3/2 - 5/2

## Manually operated valves



## Symbol



## Materials

Body	Zinc diecast
Actuator	Zinc diecast
Spool	Stainless steel
Bushes	Brass
Seals	Viton (valve body) Nitrile (actuators)
Spring housing	Nylon (acetal resin)

## Technical information

Type	Spool valve
Style	Body ported
Port size	G <sup>1</sup> / <sub>4</sub>
Mounting	Any plane
Temperature range	-10°C to +80°C

## Pneumatic information

Pressure range	0 to 10 bar
Nominal Ø	7mm
Nominal flow at 7 bar	26 dm <sup>3</sup> /s

## Ordering information

Part nos.	Type	Actuator	Return	Symbol	Optional air pilot return
<b>B53003HXS</b>	3/2	Button	Spring		
<b>B53004HXS</b>	5/2	Button	Spring		
<b>B53003HX</b>	3/2	Button	Spring		
<b>B53004HX</b>	5/2	Button	Spring		
<b>B53003LS</b>	3/2	Lever	Spring		
<b>B53004LS</b>	5/2	Lever	Spring		
<b>B53003LT</b>	3/2	Lock down lever			
<b>B53004LT</b>	5/2	Lock down lever			
<b>M53004L-10A</b>	Panel mounting plate				

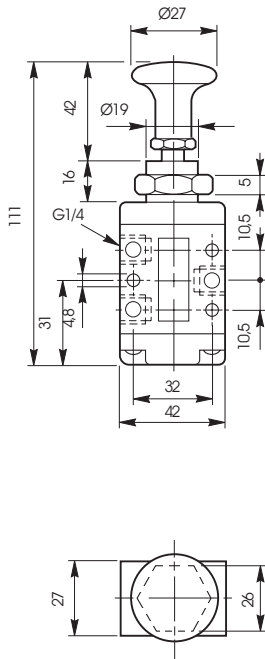
**Note:** All valves featured on this page are available with an air pilot return mechanism.

To order delete 'S' for spring and add 'P'. e.g. **B53003CP**  
For dimensions of air pilot housing see page

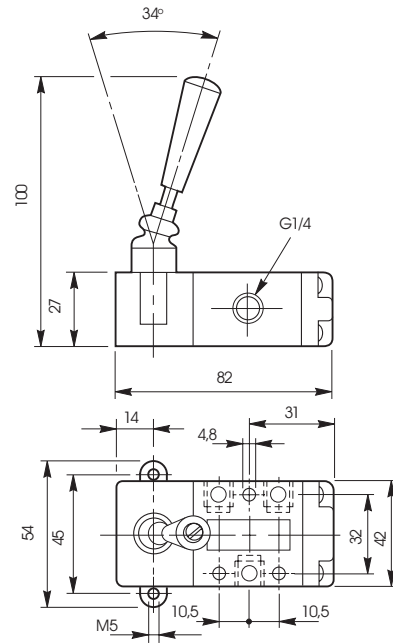
# Directional control valves G<sup>1</sup>/<sub>4</sub>, 3/2 - 5/2

## 3/2 valve dimensions (mm)

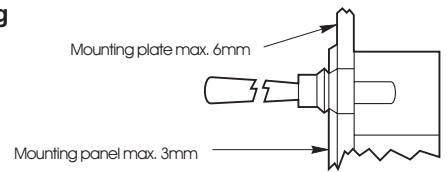
### Button operated spring return



### Lever operated spring return

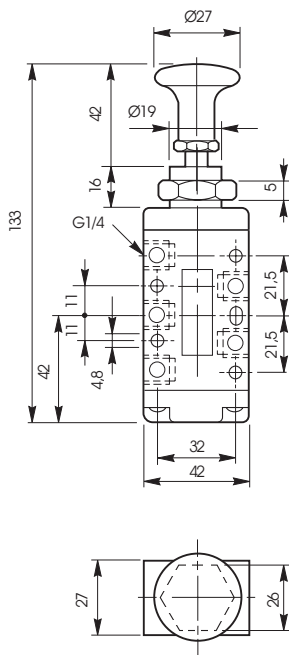


### Panel mounting

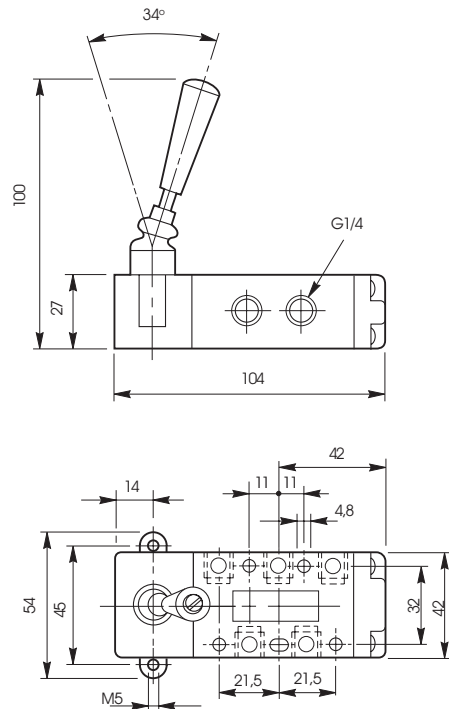


## 5/2 valve dimensions (mm)

### Button operated spring return



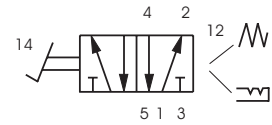
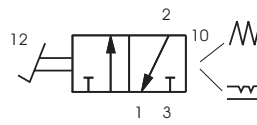
### Lever operated spring return



# Directional control valves G<sup>1</sup>/<sub>4</sub>, 3/2 - 5/2

## Manually operated valves

## Symbol



## Materials

Body	Zinc diecast
Actuator	Zinc diecast
Spool	Stainless steel
Bushes	Brass
Seals	Viton (valve body) Nitrile (actuators)
Spring housing	Nylon (acetal resin)

## Technical information

Type	Spool valve
Style	Body ported
Port size	G <sup>1</sup> / <sub>4</sub>
Mounting	Any plane
Temperature range	-10°C to +80°C

## Pneumatic information

Pressure range	0 to 10 bar
Nominal Ø	7mm
Nominal flow at 7 bar	26 dm <sup>3</sup> /s

## Ordering information

Part nos.	Type	Actuator	Return	Symbol	Optional air pilot return
<b>B53003FS</b>	3/2	Foot pedal	Spring		
<b>B53004FS</b>	5/2	Foot pedal	Spring		
<b>B53003G</b>	3/2	Foot pedal	Foot pedal		
<b>B53004G</b>	5/2	Foot pedal	Foot pedal		

**Note:** For details of foot guard kits see page

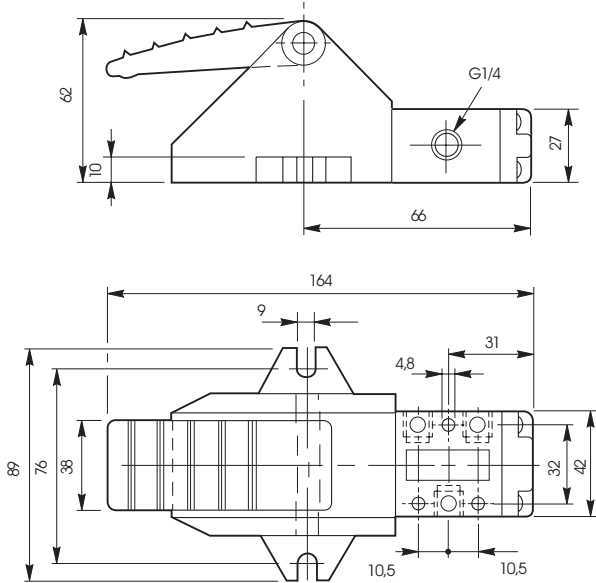
Spring return valves are available with an air pilot return mechanism. To order delete 'S' for spring and add 'P'.  
e.g. **B53003FP**



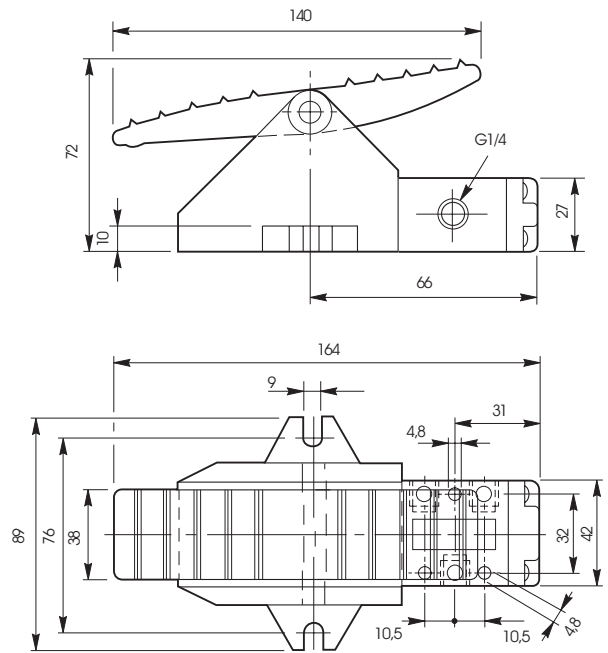
# Directional control valves G<sup>1</sup>/<sub>4</sub>, 3/2 - 5/2

## 3/2 valve dimensions (mm)

Foot pedal operated  
spring return

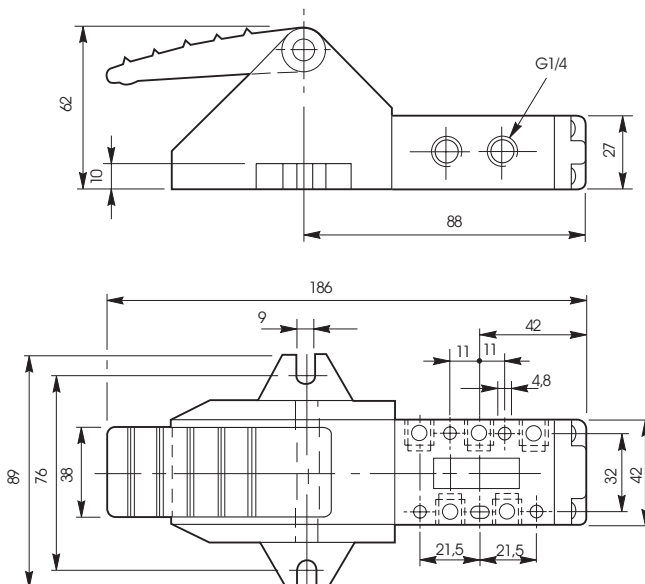


Foot pedal operated

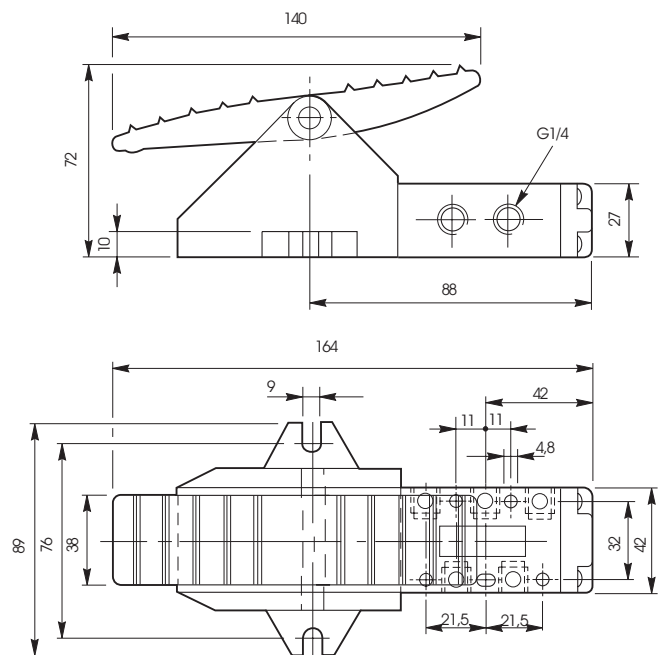


## 5/2 valve dimensions (mm)

Foot pedal operated  
spring return

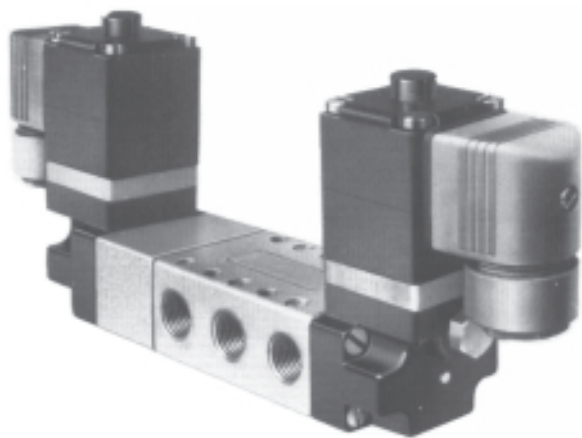


Foot pedal operated

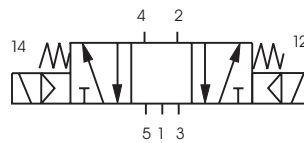


# Directional control valves G<sup>1</sup>/<sub>4</sub>, - 5/3

**Double solenoid pilot operated  
5 watt solenoid  
Self centring valves**



## Symbol



## Materials

Body	Zinc diecast
Actuator	Zinc diecast
Spool	Stainless steel
Bushes	Brass
Seals	Viton (valve body) Nitrile (actuators)

## Technical information

Type	Spool valve
Style	Body ported
Port size	G <sup>1</sup> / <sub>4</sub>
Mounting	Any plane
Temperature range	-10°C to +55°C

## Pneumatic information

Pressure range	0 to 10 bar
Minimum Spring return	1,7 bar
Nominal Ø	7mm
Nominal flow at 7 bar	26 dm <sup>3</sup> /s

## Electrical information

Power consumption	Inrush	Hold
AC	14VA	9VA
DC	5 Watt	
Rating	100% ED	
Isolating class	F	
Protection class	IP 65 (P 54) DIN 40 050	
Connection	DIN 43 650 Form B	

## Voltage selection

Suffix	50 Hz	D.C.
T	10-13	5-6.5
TA	2-26	10-13
T F	44-55	21-26
T C	85-110	43-55
S	94-121	54-69
T S	153-242	94-121
SA	204-264	102-132

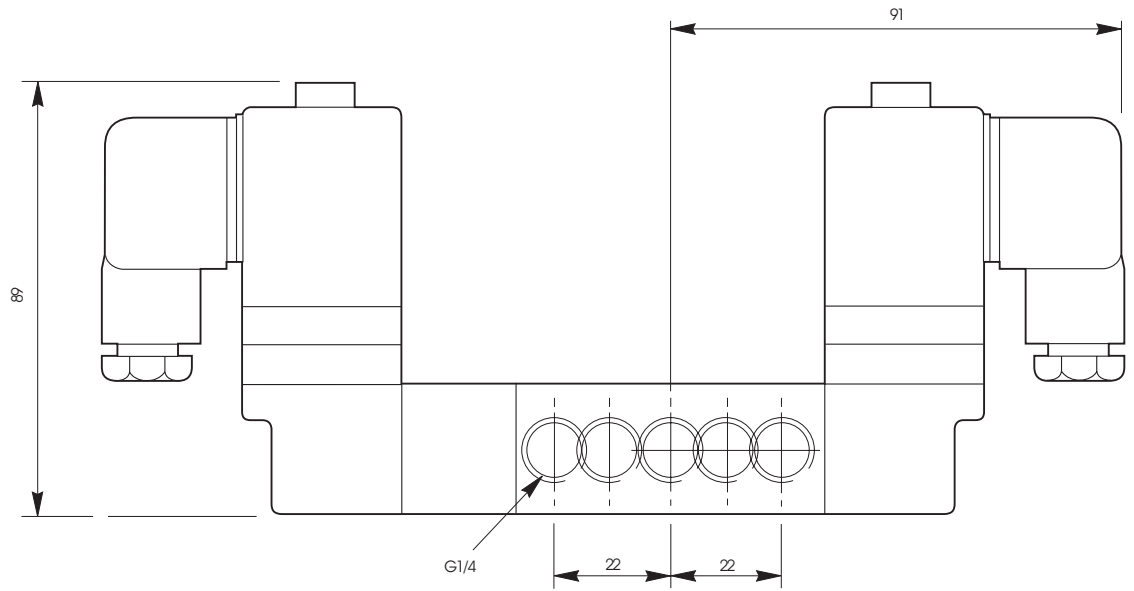
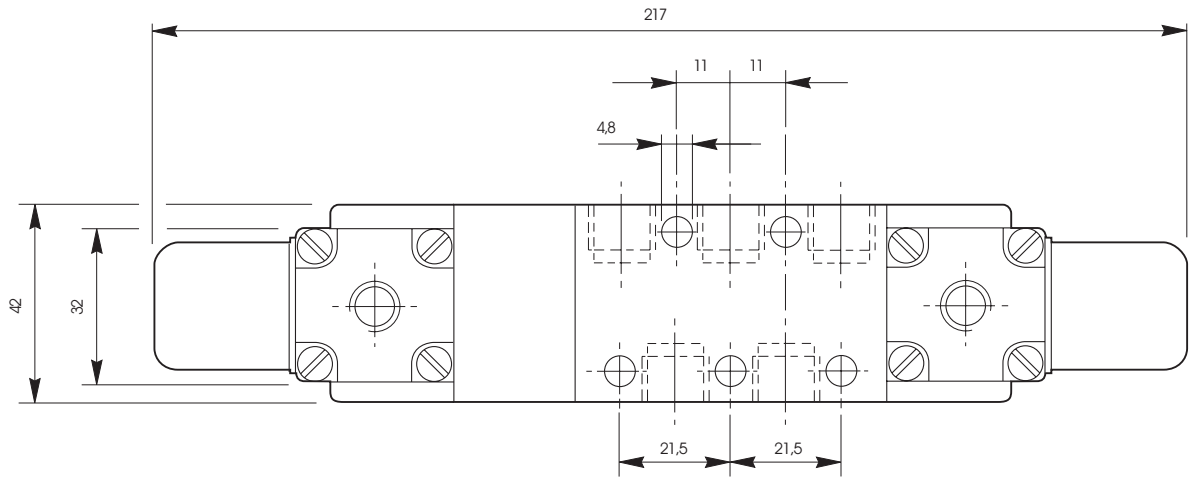
## Ordering information

Part nos.	Type	Actuator	Return	Mid	Symbol
<b>LB53024X*</b>	5/3	Solenoid pilot	Solenoid pilot	Neutral	
<b>LB53024Y*</b>	5/3	Solenoid pilot	Solenoid pilot	Negative	
<b>LB53024Z*</b>	5/3	Solenoid pilot	Solenoid pilot	Positive	

\*Specify voltage and add suffix letters  
For manual override add suffix M.

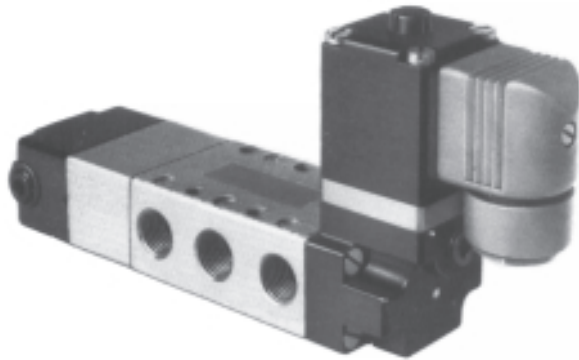
# Directional control valves G<sup>1</sup>/<sub>4</sub>, - 5/3

## 5/3 valve dimensions (mm)

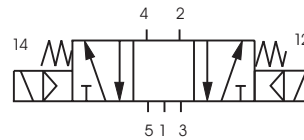


# Directional control valves G<sup>1</sup>/<sub>4</sub>, - 5/3

## Solenoid pilot operated 4 and 5 watt solenoids



## Symbol



## Materials

Body	Zinc diecast
Actuator	Zinc diecast
Spool	Stainless steel
Bushes	Brass
Seals	Viton (valve body) Nitrile (actuators)

## Technical information

Type	Spool valve
Style	Body ported
Port size	G <sup>1</sup> / <sub>4</sub>
Mounting	Any plane
Temperature range	-10°C to +55°C

## Pneumatic information

Pressure range	0 to 10 bar
Minimum Spring return	1,7 bar
Nominal Ø	7mm
Nominal flow at 7 bar	26 dm <sup>3</sup> /s

## Electrical information

Power consumption	Inrush	Hold
4 watt solenoid	AC 9VA	6VA
	DC 4 Watt	
Power consumption	Inrush	Hold
5 watt solenoid	AC 14VA	9VA
	DC 5 Watt	
Rating	100% ED	
Isolating class	F	
Protection class	IP 65 (P 54) DIN 40 050	
Connection	DIN 43 650 Form B	

## Voltage selection

Suffix	50 Hz	D.C.
T	10-13	5-6.5
TA	2-26	10-13
T F	44-55	21-26
T C	85-110	43-55
S	94-121	54-69
T S	153-242	94-121
SA	204-264	102-132

For 4 watt coils see page

## Ordering information

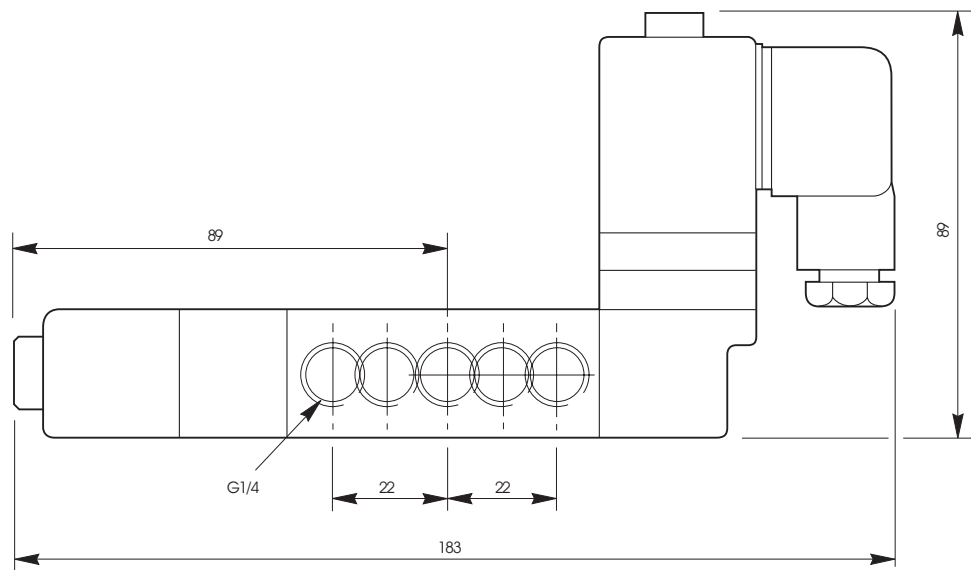
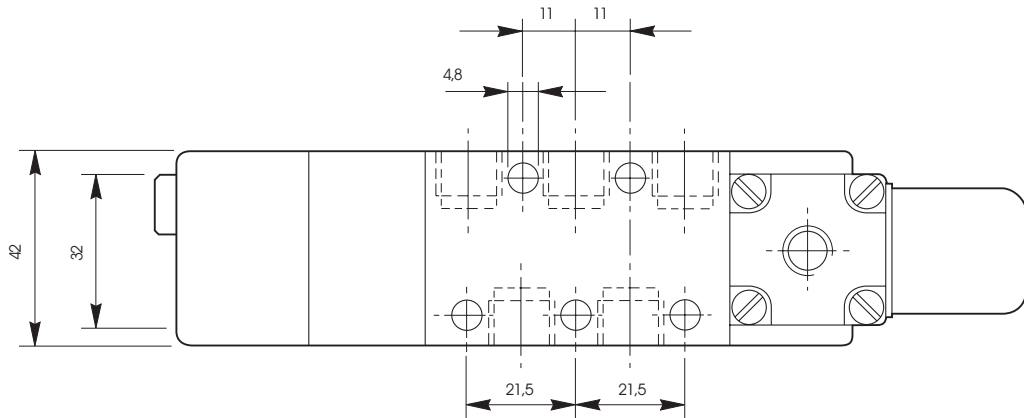
Part nos.	Type	Coil	Actuator	Return	Mid	Symbol
<b>LB53434X*</b>	5/3	4 watt	Solenoid pilot	Air pilot	Neutral	
<b>LB53434Y*</b>	5/3	4 watt	Solenoid pilot	Air pilot	Negative	
<b>LB53434Z*</b>	5/3	4 watt	Solenoid pilot	Air pilot	Positive	
<b>LB53034X*</b>	5/3	5 watt	Solenoid pilot	Air pilot	Neutral	
<b>LB53034Y*</b>	5/3	5 watt	Solenoid pilot	Air pilot	Negative	
<b>LB53034Z*</b>	5/3	5 watt	Solenoid pilot	Air pilot	Positive	

\*Specify voltage and add suffix letters

For manual override add suffix M.

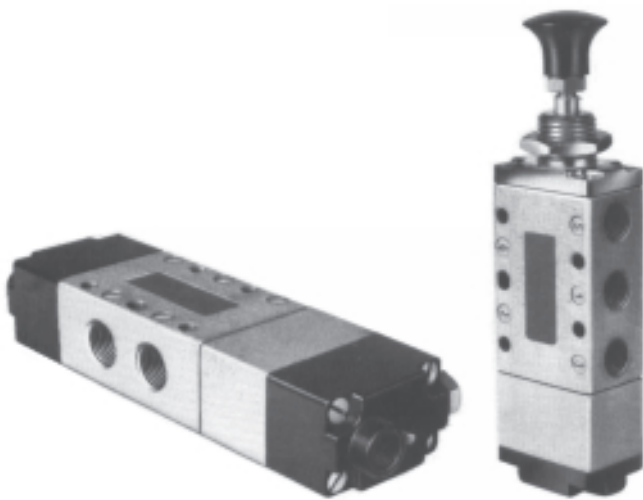
# Directional control valves G<sup>1</sup>/<sub>4</sub>, - 5/3

## 5/3 valve dimensions (mm)

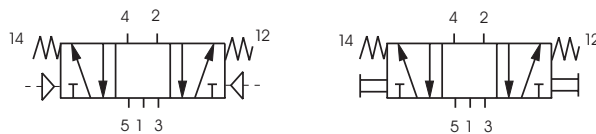


# Directional control valves G<sup>1</sup>/<sub>4</sub>, - 5/3

## Button and air pilot operated Self centring valves



## Symbol



## Materials

Body	Zinc diecast
Actuator	Zinc diecast
Spool	Stainless steel
Bushes	Brass
Seals	Viton (valve body) Nitrile (actuators)
Spring housing	Nylon (acetal resin)

## Technical information

Type	Spool valve
Style	Body ported
Port size	G <sup>1</sup> / <sub>4</sub>
Mounting	Any plane
Temperature range	-10°C to +80°C

## Pneumatic information

Pressure range	0 to 10 bar
Minimum Spring return	2,7 bar
Nominal Ø	7mm
Nominal flow at 7 bar	26 dm <sup>3</sup> /s

## Button colours

X = Black (standard)
Y = Red
Z = Green

## Ordering information

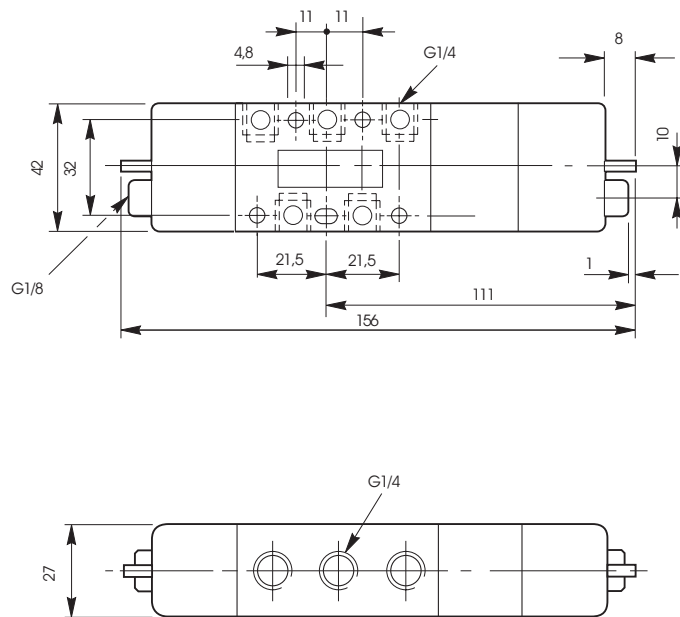
Part nos.	Type	Actuator	Return	Mid	Symbol	Optional pilot return
<b>B53004PX</b>	5/3	Air pilot	Spring	Neutral		
<b>B53004PY</b>	5/3	Air pilot	Spring	Negative		
<b>B53004PZ</b>	5/3	Air pilot	Spring	Positive		
<b>B53004HXX</b>	5/3	Button	Spring	Neutral		
<b>B53004HXY</b>	5/3	Button	Spring	Negative		
<b>B53004HXZ</b>	5/3	Button	Spring	Positive		

For dimension of air housing see page

# Directional control valves G<sup>1</sup>/<sub>4</sub>, - 5/3

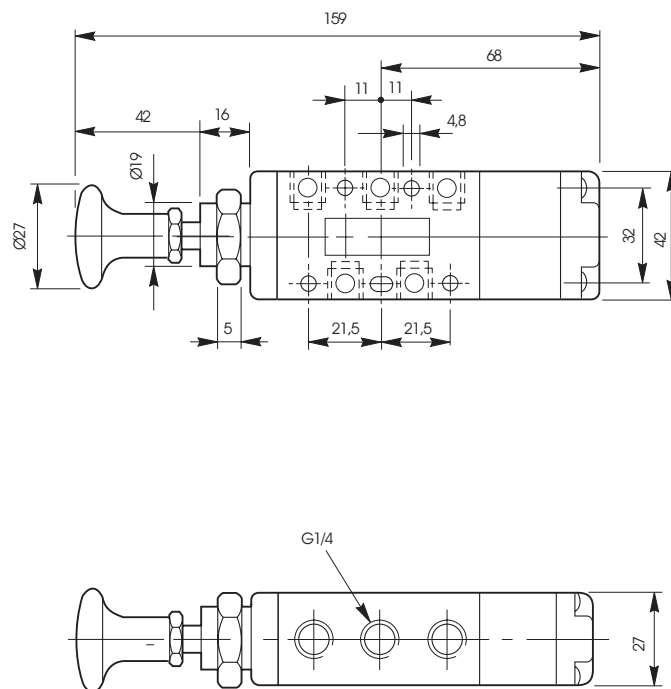
## 5/3 valve dimensions (mm)

Air pilot operated



## 5/3 valve dimensions (mm)

Button operated

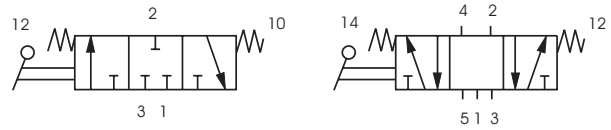


# Directional control valves G<sup>1</sup>/<sub>4</sub>, 3/3 - 5/3

## Lever operated Self centring valves



## Symbol



## Materials

Body	Zinc diecast
Actuator	Zinc diecast
Spool	Stainless steel
Bushes	Brass
Seals	Viton (valve body) Nitrile (actuators)
Spring housing	Nylon (acetal resin)

## Technical information

Type	Spool valve
Style	Body ported
Port size	G <sup>1</sup> / <sub>4</sub>
Mounting	Any plane
Temperature range	-20°C to +80°C

## Pneumatic information

Pressure range	0 to 10 bar
Nominal Ø	7mm
Nominal flow at 7 bar	26 dm <sup>3</sup> /s

## Ordering information

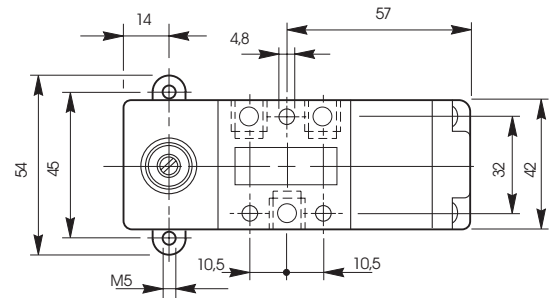
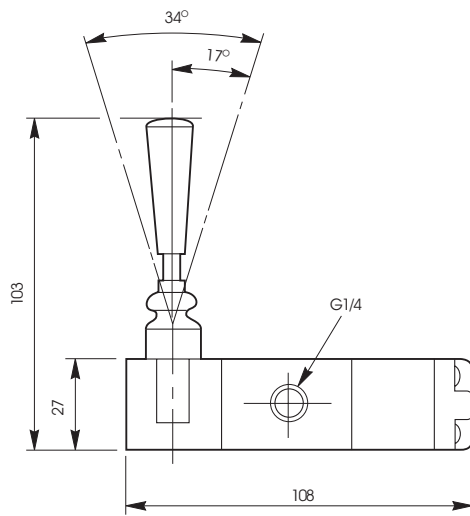
Part nos.	Type	Actuator	Return	Mid	Symbol	Optional air pilot return
<b>B53003LX</b>	3/3	Lever	Spring	Neutral		
<b>B53004LX</b>	5/3	Lever	Spring	Neutral		
<b>B53003LY</b>	5/3	Lever	Spring	Negative		
<b>B53004LZ</b>	5/3	Lever	Spring	Positive		
<b>M53004L-10A</b>	Panel mounting plate					



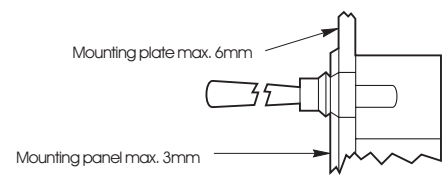
# Directional control valves G<sup>1</sup>/<sub>4</sub>, 3/3 - 5/3

## 3/3 valve dimensions (mm)

Lever operated

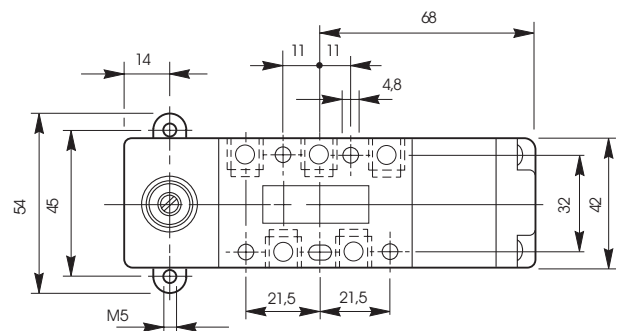
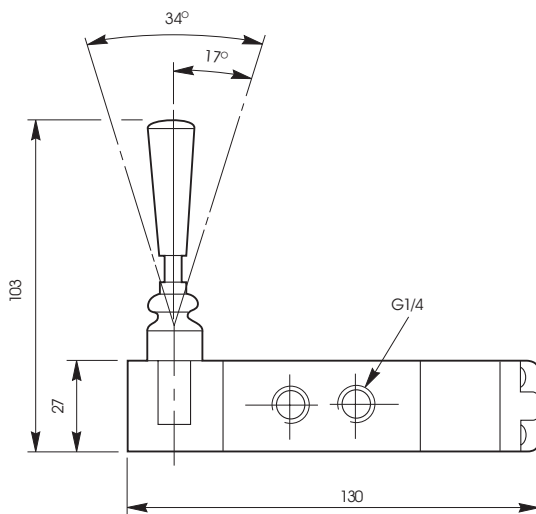


### Panel mounting



## 5/3 valve dimensions (mm)

Lever operated

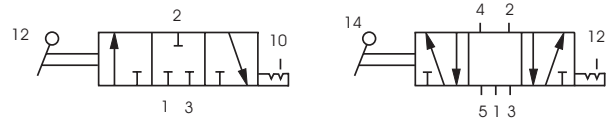


# Directional control valves G<sup>1</sup>/<sub>4</sub>, 3/3 - 5/3

## Lever operated 3 position



## Symbol



## Materials

Body	Zinc diecast
Actuator	Zinc diecast
Spool	Stainless steel
Bushes	Brass
Seals	Viton (valve body) Nitrile (actuators)
Spring housing	Nylon (acetal resin)

## Technical information

Type	Spool valve
Style	Body ported
Port size	G <sup>1</sup> / <sub>4</sub>
Mounting	Any plane
Temperature range	-20°C to +80°C

## Pneumatic information

Pressure range	0 to 10 bar
Nominal Ø	7mm
Nominal flow at 7 bar	26 dm <sup>3</sup> /s

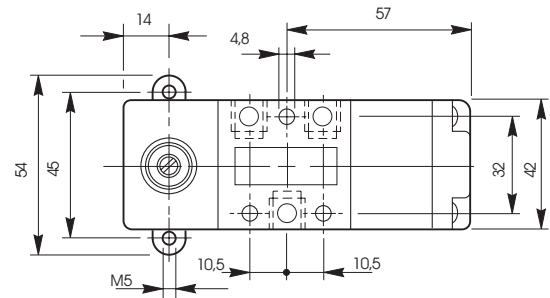
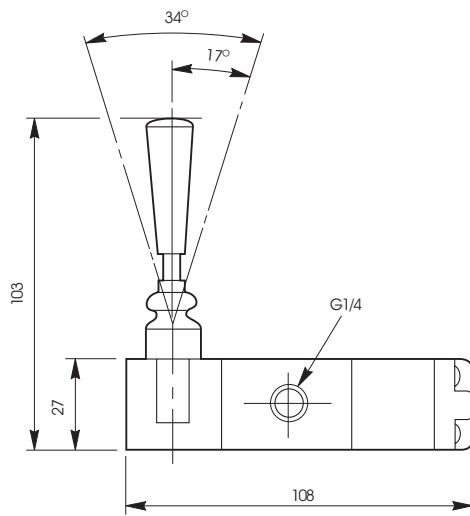
## Ordering information

Part nos.	Type	Actuator	Return	Mid	Symbol	Optional air pilot return
<b>B53003L</b>	3/3	Lever	Lever	Neutral		
<b>B53004L</b>	5/3	Lever	Lever	Neutral		
<b>B53003LW</b>	5/3	Lever	Lever	Negative		
<b>B53004LN</b>	5/3	Lever	Lever	Positive		
<b>M53004L-10A</b>	Panel mounting plate					

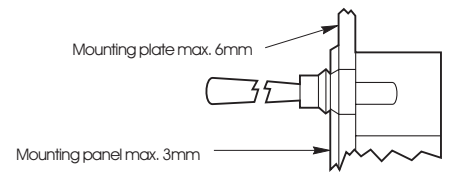
# Directional control valves G<sup>1</sup>/<sub>4</sub>, 3/3 - 5/3

## 3/3 valve dimensions (mm)

Lever operated

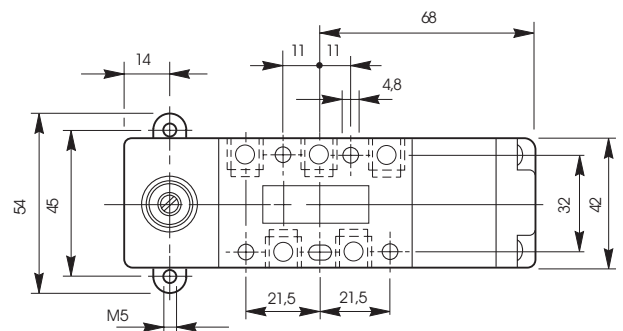
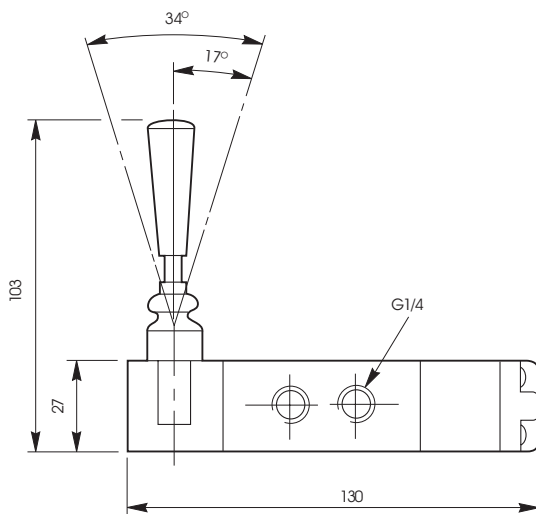


### Panel mounting



## 5/3 valve dimensions (mm)

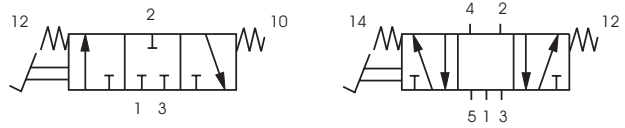
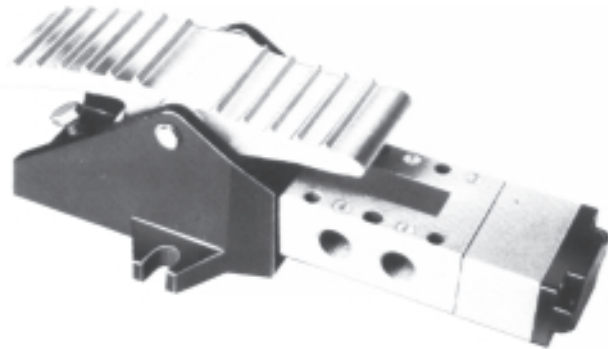
Lever operated



# Directional control valves G<sup>1</sup>/<sub>4</sub>, 3/3 - 5/3

## Manually operated valves

## Symbol



## Materials

Body	Zinc diecast
Actuator	Zinc diecast
Spool	Stainless steel
Bushes	Brass
Seals	Viton (valve body) Nitrile (actuators)
Spring housing	Nylon (acetal resin)

## Technical information

Type	Spool valve
Style	Body ported
Port size	G <sup>1</sup> / <sub>4</sub>
Mounting	Any plane
Temperature range	-10°C to +80°C

## Pneumatic information

Pressure range	0 to 10 bar
Nominal Ø	7mm
Nominal flow at 7 bar	26 dm <sup>3</sup> /s

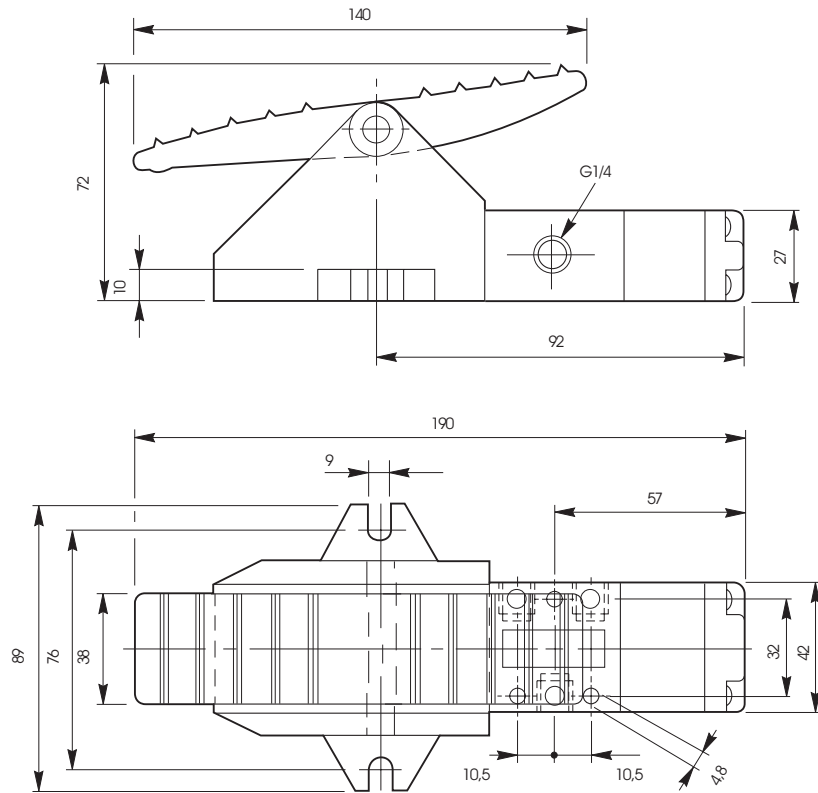
## Ordering information

Part nos.	Type	Actuator	Return	Mid	Symbol	Optional air pilot return
<b>B53003GX</b>	3/3	Foot	Foot	Neutral		
<b>B53004GX</b>	5/3	Foot	Foot	Neutral		
<b>B53004GY</b>	5/3	Foot	Foot	Negative		
<b>B53004GZ</b>	5/3	Foot	Foot	Positive		

# Directional control valves G<sup>1</sup>/<sub>4</sub>, 3/3 - 5/3

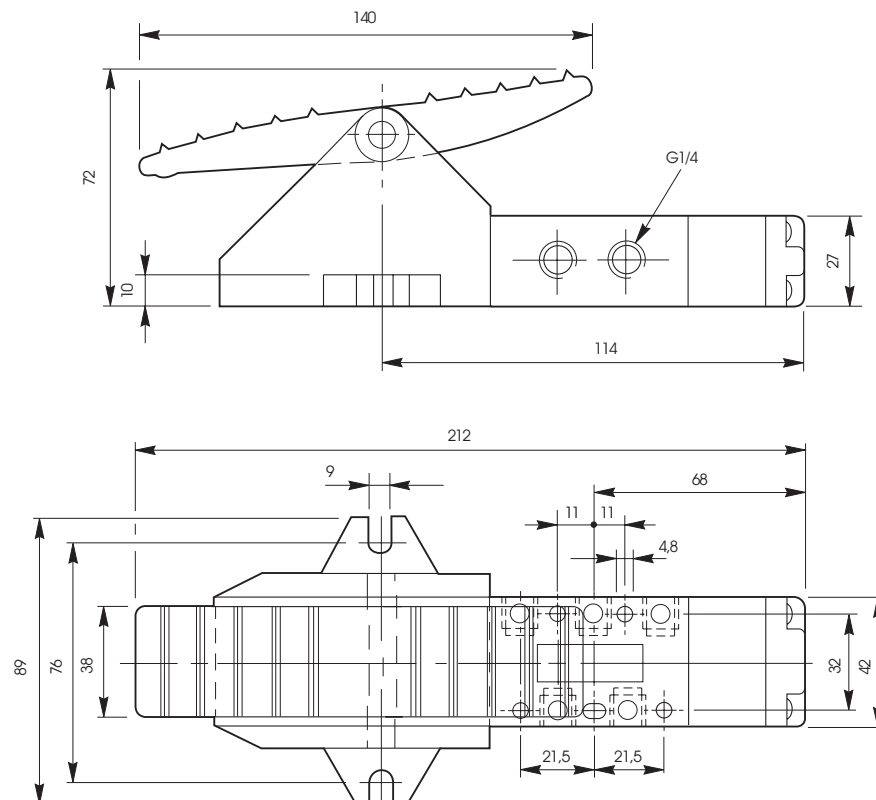
## 3/3 valve dimensions (mm)

Foot pedal operated  
spring return



## 5/3 valve dimensions (mm)

Foot pedal operated  
spring return



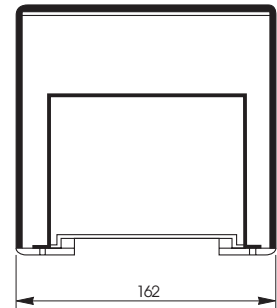
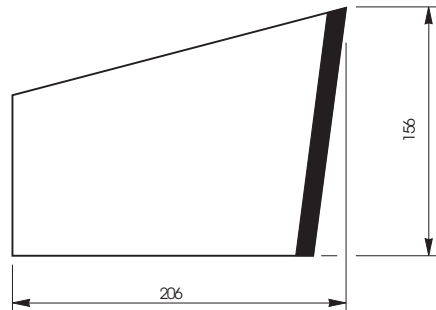
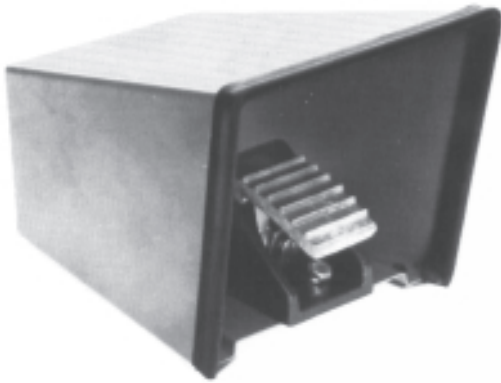
# Directional control valves G<sup>1</sup>/<sub>4</sub>

---

## Foot guard kit

To suit G<sup>1</sup>/<sub>4</sub> foot operated spool valves:

**B53003FS, B53004FS**



The guard completely encloses the valve and is designed to prevent both accidental operation and protect the operators foot from small metal fragments, dirt and grease.

Manufactured in mild steel, the front edge is protected by a rubber strip.

All valve connections are made through the back of the guard, producing a clean design of modern appearance.

The guard kit is supplied complete with valve mounting bolts, nuts and washers.

---

Part no. **3117**

---

## External air supplies

All solenoid-pilot operated valves have internal pilot air supply from a drilling within the valve, but are provided with an external port normally sealed by a blanking plug.

Internal pilot supply provides the same pressure for both main valve and pilot supply - with the use of external pilot supply variation of pressure on the solenoid operator is possible. When using solenoid valves with any medium other than air, then an external air supply must be made to the pilot to facilitate valve changeover.

If it is required to use external pilot supply, then the blanking plug should be removed from the port and the smaller plug contained underneath inserted into the internal counter bore drilling to seal off the internal air supply.

For applications using any medium other than air (i.e. vacuum or low pressure oil) we recommend you consult Technical Sales prior to operation.

## Repair kits

Mechanically operated valves  
Manually operated valves

Part no. **53007**

Air pilot operated valves  
Differential pilot operated valves

Part no. **53007**

Part no. **53007JR**

Solenoid pilot operated valves

Part no. **53007S**

## Lubricating oils

To ensure long life and trouble free service from valves, it is recommended the equipment should be adequately lubricated by means of lubricators which disperse oil into the system. Only paraffinic based oils can be used, and the following recommendations are given as a general guide to types of oil that are suitable for use with Parker Schrader Bellows airline equipment.

The list opposite does not preclude the use of oils manufactured by other companies but oils must be paraffinic based.

As a general guide, lubricator drip rates should be 1 drip/minute for every 5 litre/second (10 cubic feet per minute) passed through the equipment.

Oil company	Grade	Viscosity
Century oils	P.W.L.A.	32
Alexander Duckham	Zircon 4	32
Gulf oil (GB) Limited	Harmony 43 AW	32
Shell (UK) oil	Tellus 37	37
Burmah Castrol	Hyspin AWS 32	32
Edgar Vaughan	Y Hydrodrive HP 100	32
Esso Petroleum	Nuto H32	32
B.P.	HLP 32	32
Mobile Oil Company	DTE Oil - Light	32
Motul	VPI-A	32
Silkolene	Derwent 32	32