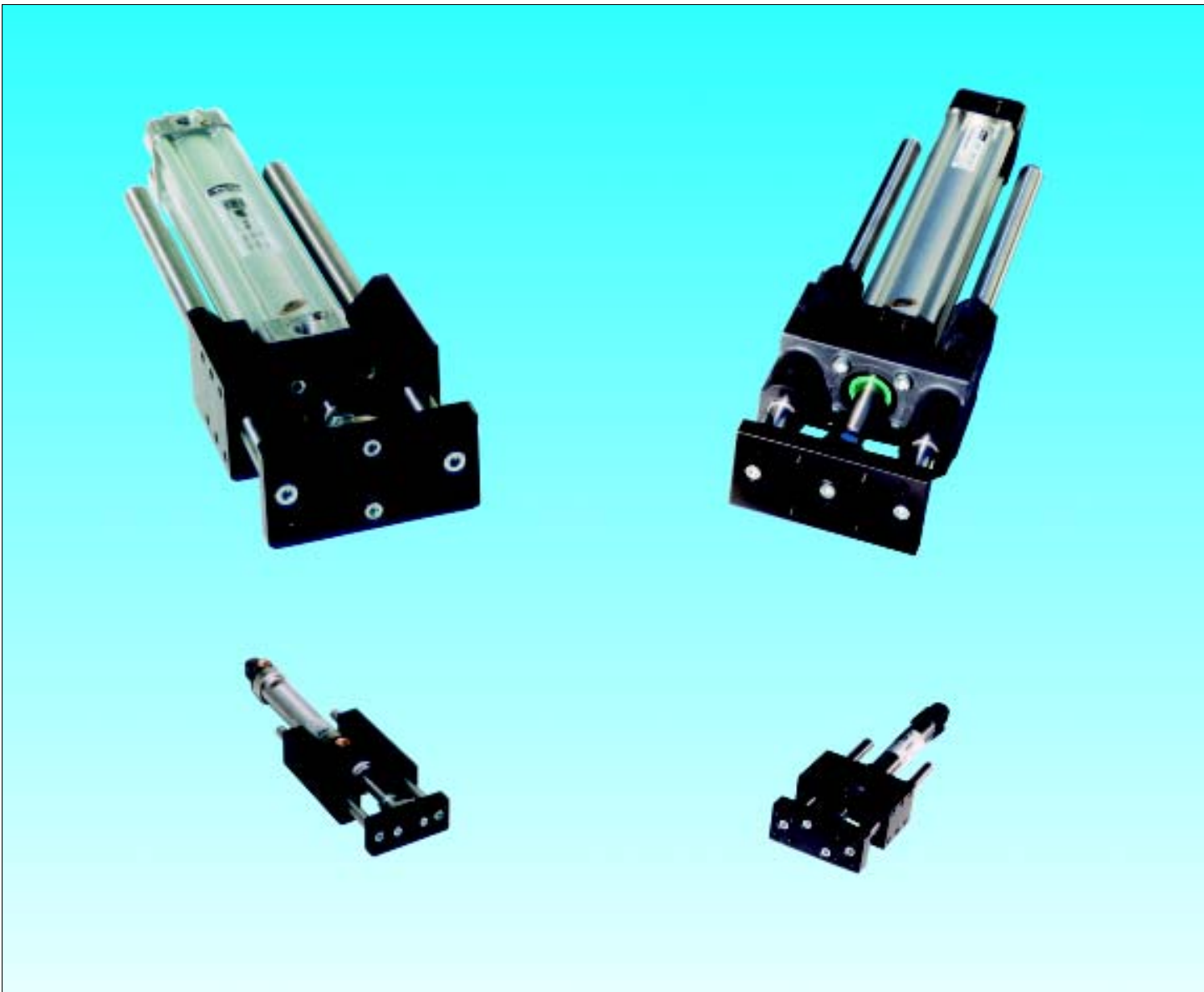


# ***Rod Guidance Units***

*for Ø 12 to 25 mm ISO 6432 cylinders*

*for Ø 32 to 100 mm ISO 6431 cylinders*

Catalogue 2404UK-bl

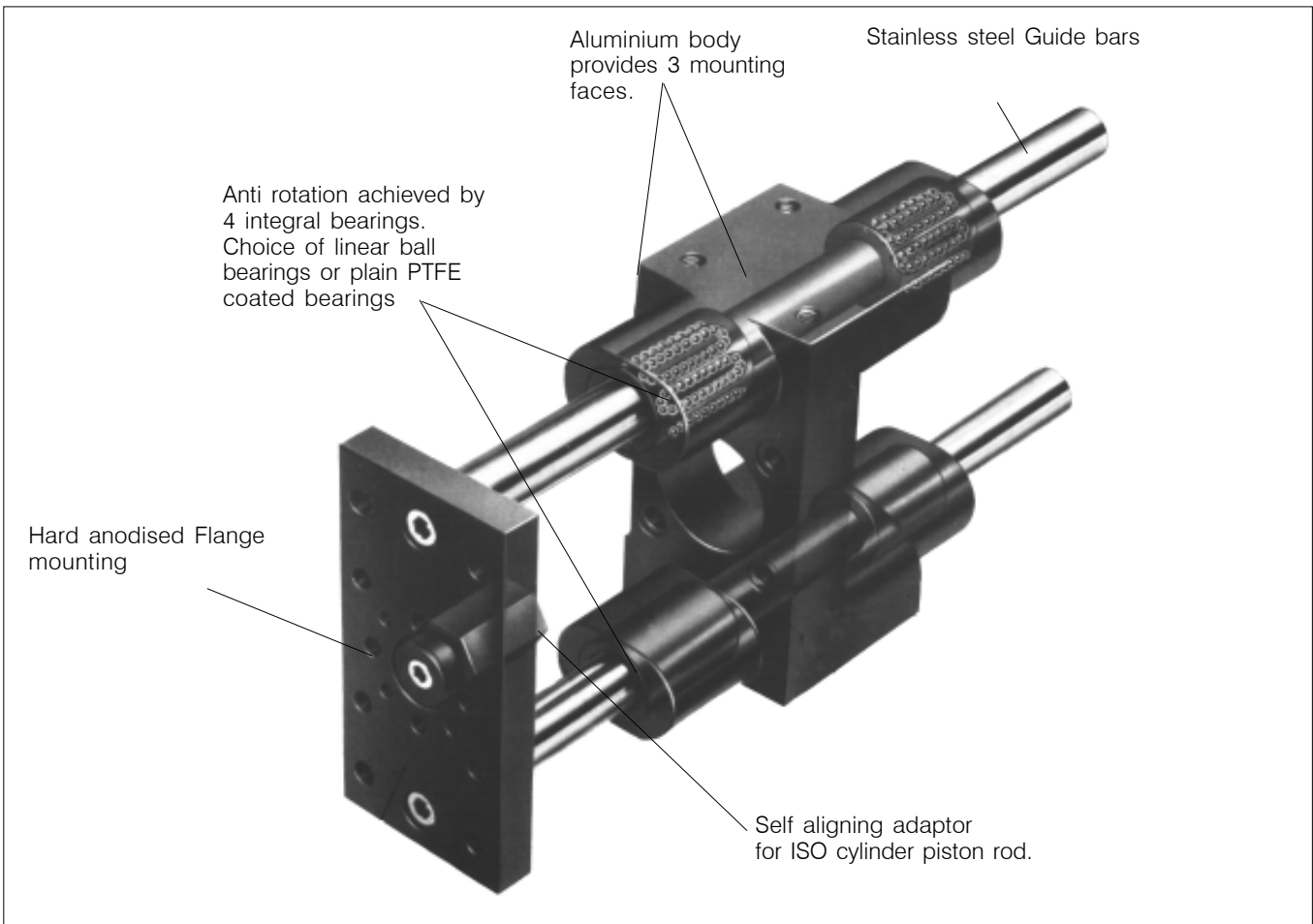


# Rod guidance Units for Ø 12 to 100 mm ISO cylinders

## Contents

|  |        |   |
|--|--------|---|
| Features.....  | page 2 | Tech. info. "U" style units for ISO Ø 32 to 100 mm.cylinders.page 7 |
| Order code.....  | page 3 | Tech. info. "H" style units for ISO Ø 32 to 100 mm.cylinders.page 8 |
| Tech. info. "U" and "H" styles units for ISO Ø 12 to 25 mm cyl..page 4 |        | Dimensions "U" style units for ISO Ø 32 to 100 mm..cyl.....page 9   |
| Dimensions "U" style units for ISO Ø 12 to 25 mm cylinders..page 5     |        | Dimensions "H" style units for ISO Ø 32 to 100 mm..cyl..... page 10 |
| Dimensions "H" style units for ISO Ø 12 to 25 mm cylinders.page 6      |        | Mounting kits for Ø 32 to 100 mm Rod guidance Units page 11         |

## Features



### Range

3 versions of the Piston Rod Guidance Units are available.

"H" style, with plain PTFE coated bearings for ISO Ø 32 to 100 mm cylinders, low-cost version for light loadings.

"H" style, with 4 linear ball bearings, for ISO Ø 12 to 100 mm, for more demanding applications with greater loadings.

"U" style, with plain PTFE coated bearings, for ISO Ø 12 to 100 mm for heavy loadings.

### Anti rotation

Twin guide bars prevent piston rod rotation. The piston rod is fixed to the front flange by a self aligning adaptor.

### High loading torque

The use of high specification components in the design ensures long service life even under the maximum loading and torque.

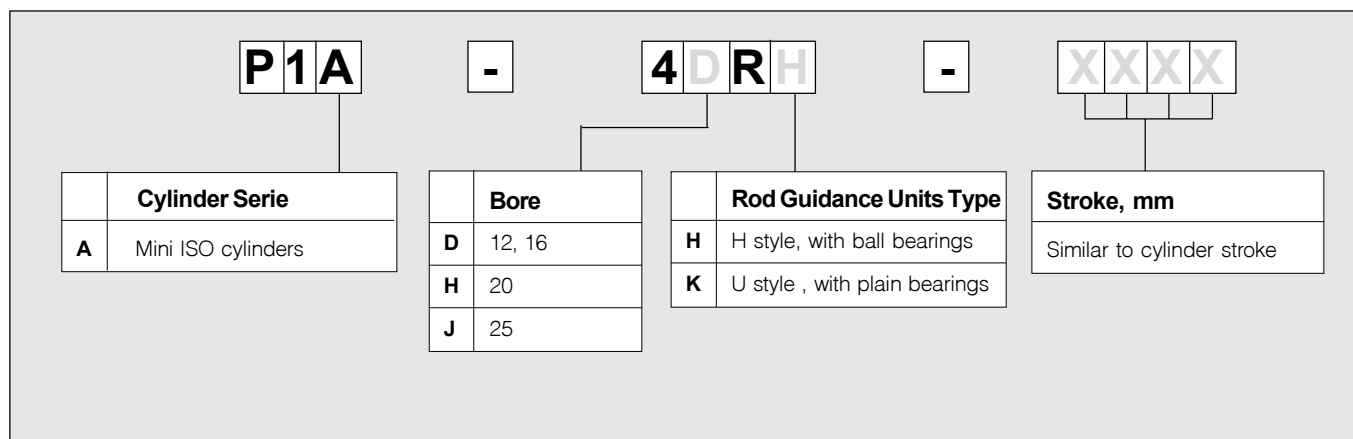
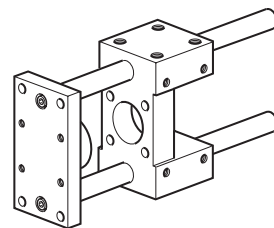
### Light weight

The cast aluminium body is of compact and light design and provides optional mounting in both vertical or horizontal planes.

# Rod guidance Units for Ø 12 to 100 mm ISO cylinders

## Order code

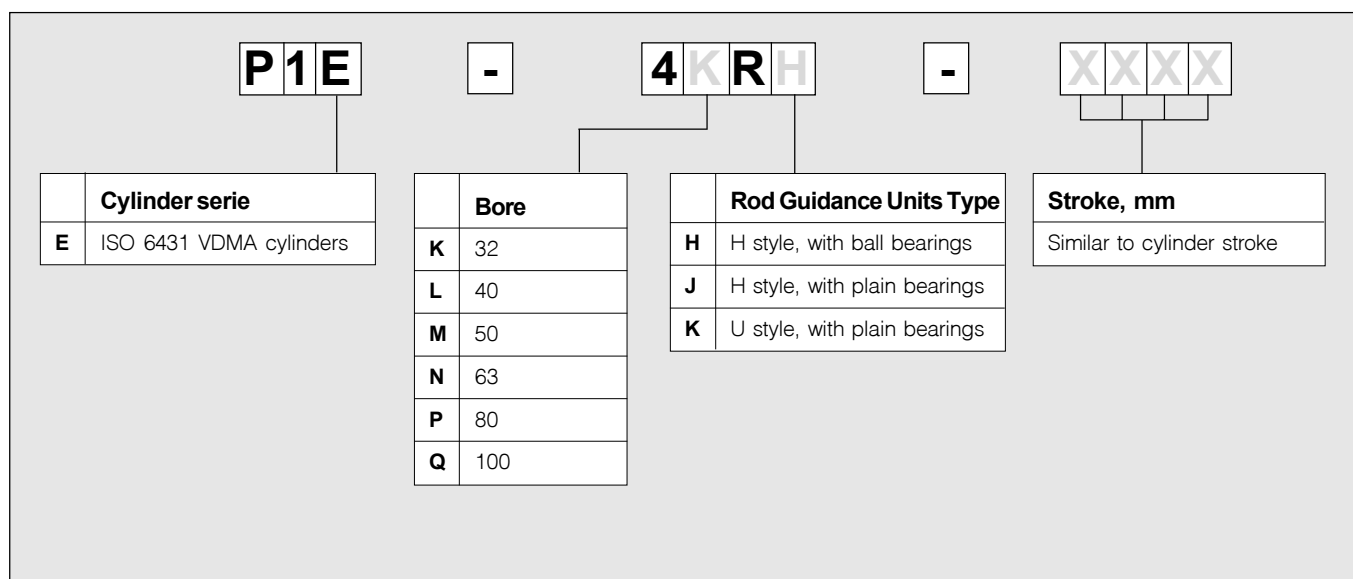
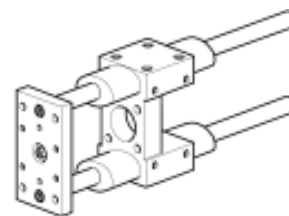
Rod guidance Units for Ø 12 to 25 mm ISO 6432 cylinders



Example : **P1A-4DRH-0100** :

Piston rod guidance unit, H style with ball bearings, for Ø 12 or 16 mm stroke 100 mm ISO cylinders.

Rod guidance Units for Ø 32 to 100 mm ISO 6431 cylinders



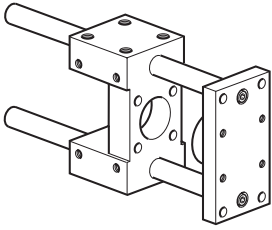
Example : **P1E-4NRH-0200** :

Piston rod guidance unit, H style with ball bearings, for Ø 63 mm stroke 200 mm ISO cylinders.

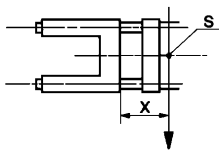
# Rod guidance Units for $\varnothing$ 12 to 25 mm ISO cylinders

## Technical informations

### "U" style Rod guide with plain bearings

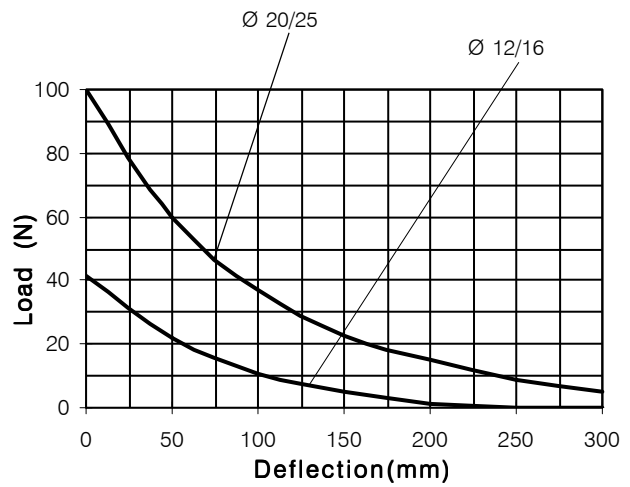


#### Maximum deflection / max load

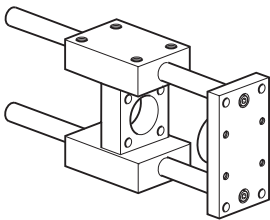


S = Centre of gravity of the load

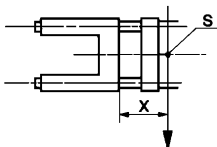
X = Deflection



### "H" style Rod guide with ball bearings

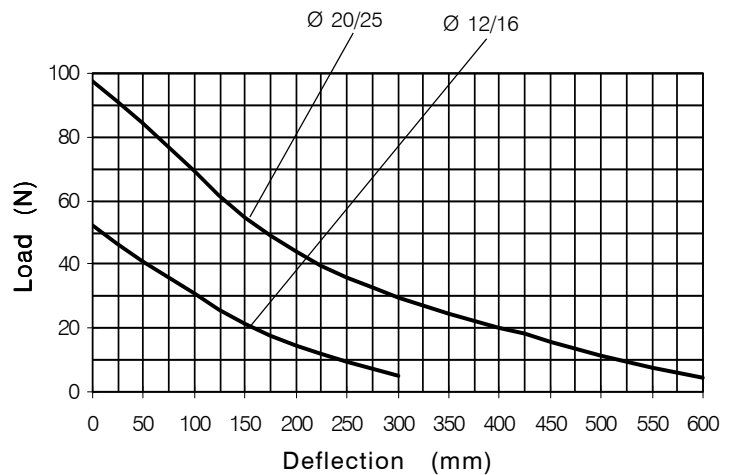


#### Maximum deflection / max load



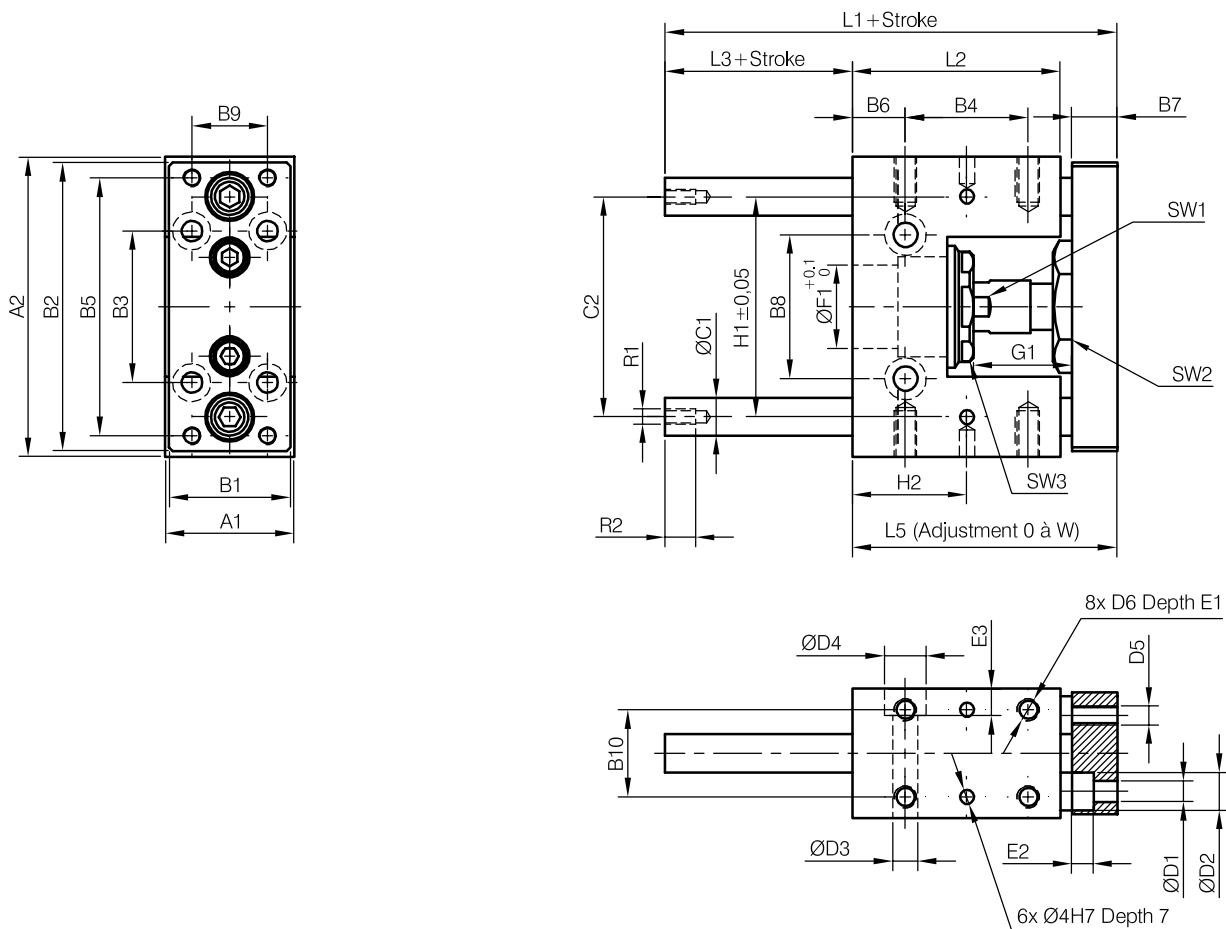
S = Centre of gravity of the load

X = Deflection



# Rod guidance Units for Ø 12 to 25 mm ISO cylinders

## Dimensions, "U" style Rod guidance Units with plain bearings, Ø 12 to 25 mm



| Ø     | A1 | A2 | B1 | B2 | B3 | B4   | B5 | B6  | B7 | B8 | B9 | B10 | C1 | C2 | D1  | D2   | D3  | D4 | D5 | D6 | E1 | E2  | E3 |
|-------|----|----|----|----|----|------|----|-----|----|----|----|-----|----|----|-----|------|-----|----|----|----|----|-----|----|
| 12-16 | 30 | 65 | 27 | 63 | 32 | 25   | 54 | 7,5 | 10 | 24 | 15 | 22  | 8  | 46 | 4,5 | 8    | 5,5 | -  | M4 | M4 | 8  | 4,6 | -  |
| 20    | 34 | 79 | 32 | 76 | 40 | 32,5 | 68 | 14  | 12 | 38 | 20 | 23  | 10 | 58 | 5,5 | 10,5 | 6,5 | 11 | M5 | M6 | 12 | 5,6 | 7  |
| 25    | 34 | 79 | 32 | 76 | 40 | 32,5 | 68 | 14  | 12 | 38 | 20 | 23  | 10 | 58 | 5,5 | 10,5 | 6,5 | 11 | M5 | M6 | 12 | 5,6 | 7  |

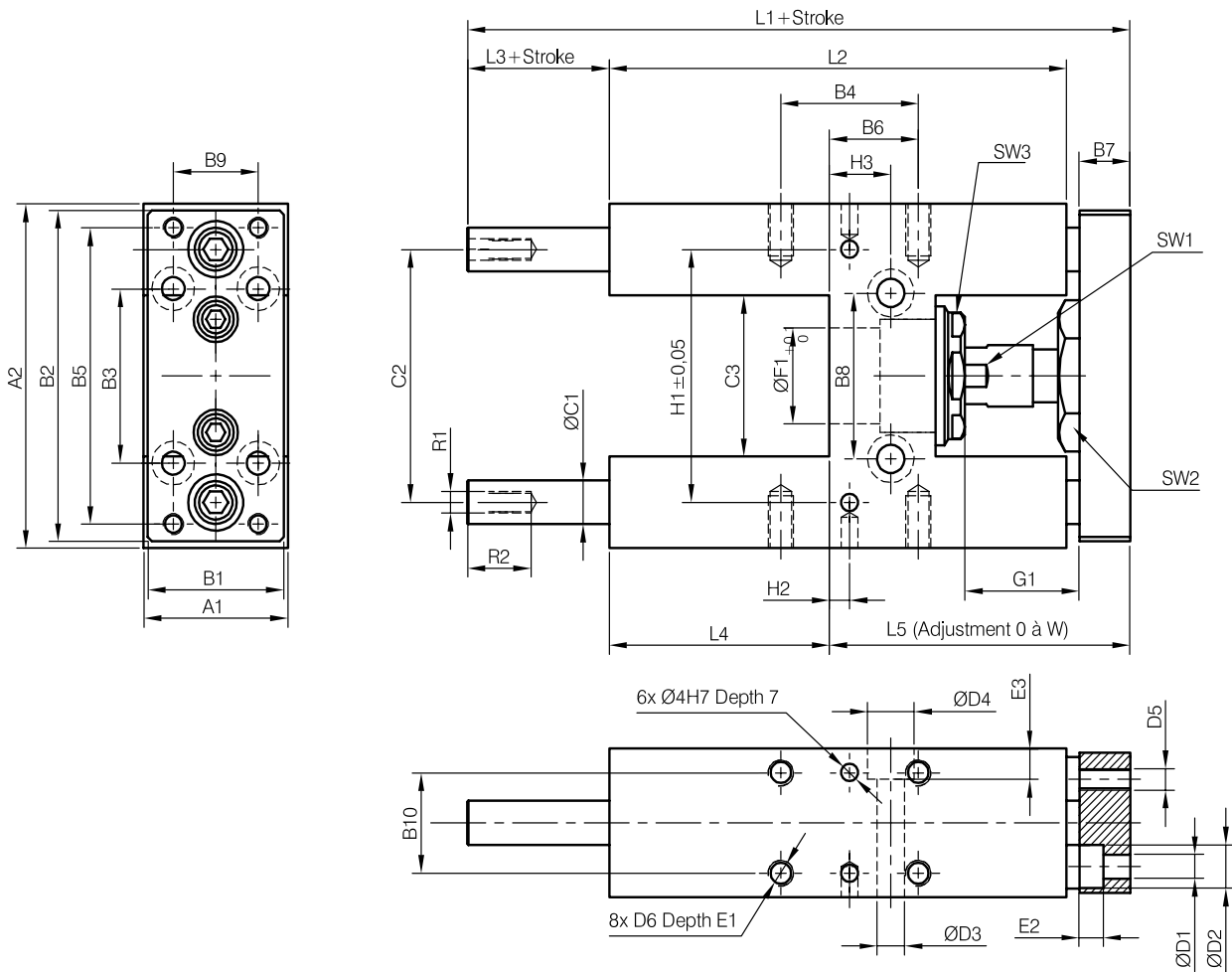
| Ø     | F1 | G1 | L1 | L2 | L3 | L5 | SW1 | SW2 | SW3 | R1 | R2 | H1 | H2    | W |
|-------|----|----|----|----|----|----|-----|-----|-----|----|----|----|-------|---|
| 12-16 | 16 | 16 | 69 | 39 | 17 | 52 | 22  | 8   | 19  | M4 | 8  | 46 | 20    | 5 |
| 20    | 22 | 30 | 85 | 55 | 15 | 70 | 30  | 13  | 27  | M6 | 11 | 58 | 30,25 | 5 |
| 25    | 22 | 23 | 85 | 55 | 15 | 70 | 30  | 13  | 27  | M6 | 11 | 58 | 30,25 | 5 |

### Order codes and weights of "U" style Rod guidance Units

| Ø     | Order codes<br>plain bearings | Maxi stroke | Weights (kg) |                 |
|-------|-------------------------------|-------------|--------------|-----------------|
|       |                               |             | 0 mm stroke  | per 10 mm extra |
| 12/16 | <b>P1A-4DRK-XXXX</b>          | 250 mm      | 0,26         | 0,0078          |
| 20    | <b>P1A-4HRK-XXXX</b>          | 250 mm      | 0,47         | 0,1233          |
| 25    | <b>P1A-4JRK-XXXX</b>          | 250 mm      | 0,47         | 0,1233          |

# Rod guidance Units for Ø 12 to 25 mm ISO cylinders

## Dimensions, "H" style Rod guidance Units with ball bearings, Ø 12 to 25 mm



| Ø     | A1 | A2 | B1 | B2 | B3 | B4   | B5 | B6 | B7 | B8 | B9 | B10 | C1 | C2 | C3 | D1  | D2   | D3  | D4 | D5 | D6 | E1 | E2  | E3 |
|-------|----|----|----|----|----|------|----|----|----|----|----|-----|----|----|----|-----|------|-----|----|----|----|----|-----|----|
| 12-16 | 30 | 65 | 27 | 63 | 32 | 32,5 | 54 | 13 | 10 | 24 | 15 | 22  | 8  | 46 | 27 | 4,5 | 8    | 5,5 | 9  | M4 | M4 | 8  | 4,6 | 6  |
| 20    | 34 | 79 | 32 | 76 | 40 | 32,5 | 68 | 21 | 12 | 38 | 20 | 23  | 10 | 58 | 37 | 5,5 | 10,5 | 6,5 | 11 | M5 | M6 | 12 | 5,6 | 7  |
| 25    | 34 | 79 | 32 | 76 | 40 | 32,5 | 68 | 21 | 12 | 38 | 20 | 23  | 10 | 58 | 37 | 5,5 | 10,5 | 6,5 | 11 | M5 | M6 | 12 | 5,6 | 7  |

| Ø     | F1 | G1 | L1  | L2  | L3 | L4 | L5 | SW1 | SW2 | SW3 | R1 | R2 | H1 | H2    | H3   | W |
|-------|----|----|-----|-----|----|----|----|-----|-----|-----|----|----|----|-------|------|---|
| 12-16 | 16 | 16 | 130 | 75  | 44 | 35 | 51 | 22  | 8   | 19  | M4 | 8  | 46 | -3.25 | 8.5  | 5 |
| 20    | 22 | 30 | 160 | 108 | 43 | 52 | 65 | 30  | 13  | 27  | M6 | 11 | 58 | 4.75  | 14.5 | 5 |
| 25    | 22 | 23 | 160 | 108 | 43 | 52 | 65 | 30  | 13  | 27  | M6 | 11 | 58 | 4.75  | 14.5 | 5 |

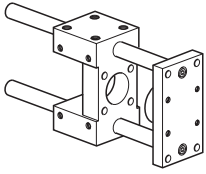
### Order codes and weights of "H" style Rod guidance Units

| Ø     | Order codes ball bearings | Maxi stroke | Weight (kg) |                |
|-------|---------------------------|-------------|-------------|----------------|
|       |                           |             | 0mm stroke  | per 10mm extra |
| 12/16 | <b>P1A-4DRH-XXXX</b>      | 250 mm      | 0,43        | 0,0078         |
| 20    | <b>P1A-4HRH-XXXX</b>      | 250 mm      | 0,77        | 0,1233         |
| 25    | <b>P1A-4JRH-XXXX</b>      | 250 mm      | 0,77        | 0,1233         |

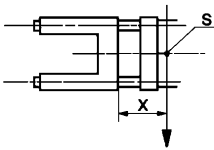
# Rod guidance Units for $\varnothing$ 32 to 100 mm ISO cylinders

## Technical information "U" style Rod guidance Units

### "U" style Rod guide with plain bearings

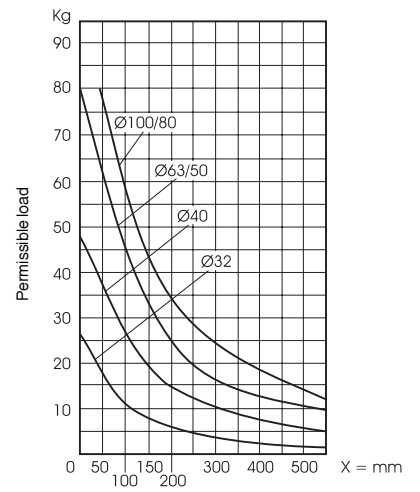


### Maximum deflection / max load



S = Centre of gravity of the load

X = Deflection

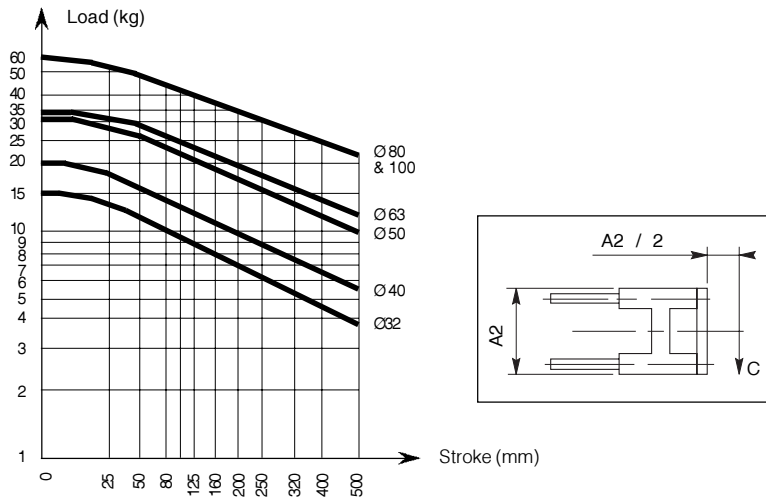


# Rod guidance Units for Ø 32 to 100 mm ISO cylinders

## Technical information

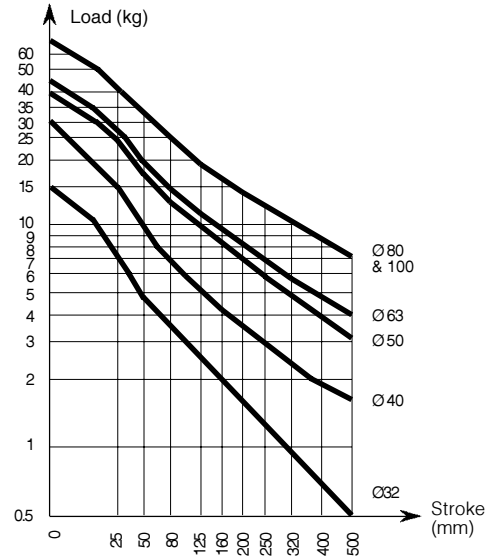
### "H" style Rod guidance Units with ball bearings

#### Maximum load

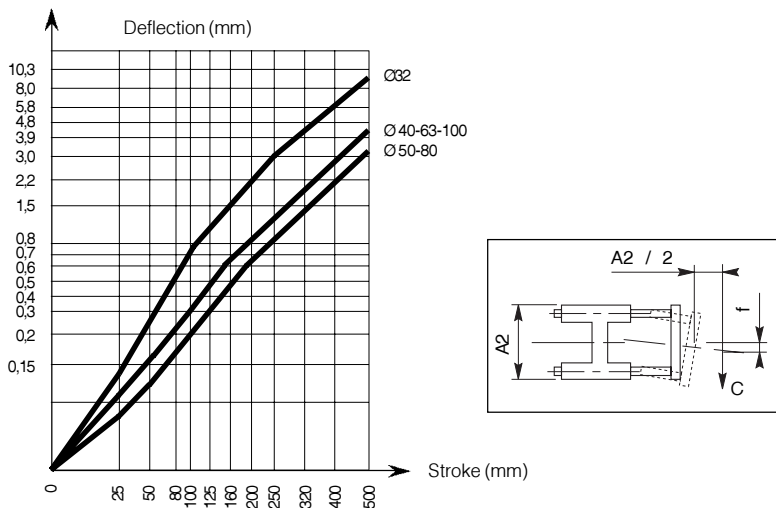


### Rod guidance Units with plain bearings

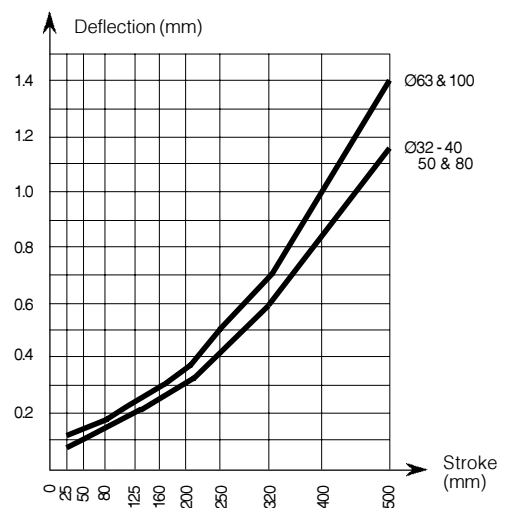
#### Maximum load



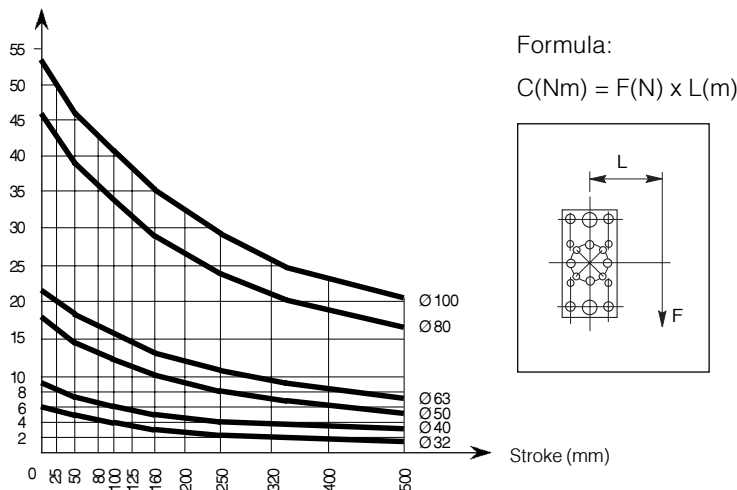
#### Maximum deflection / max load



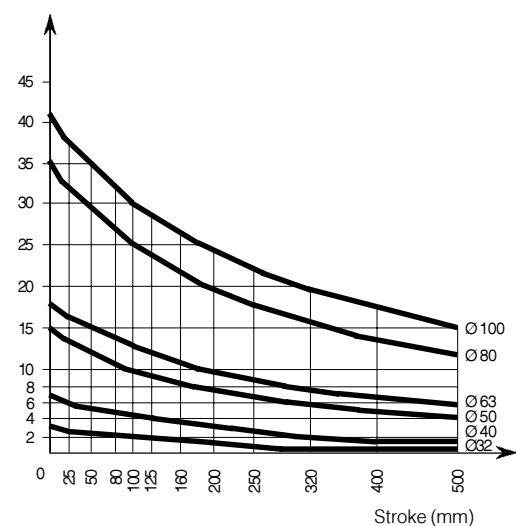
#### Maximum deflection / max load



#### Maximum permissible torque (Nm)



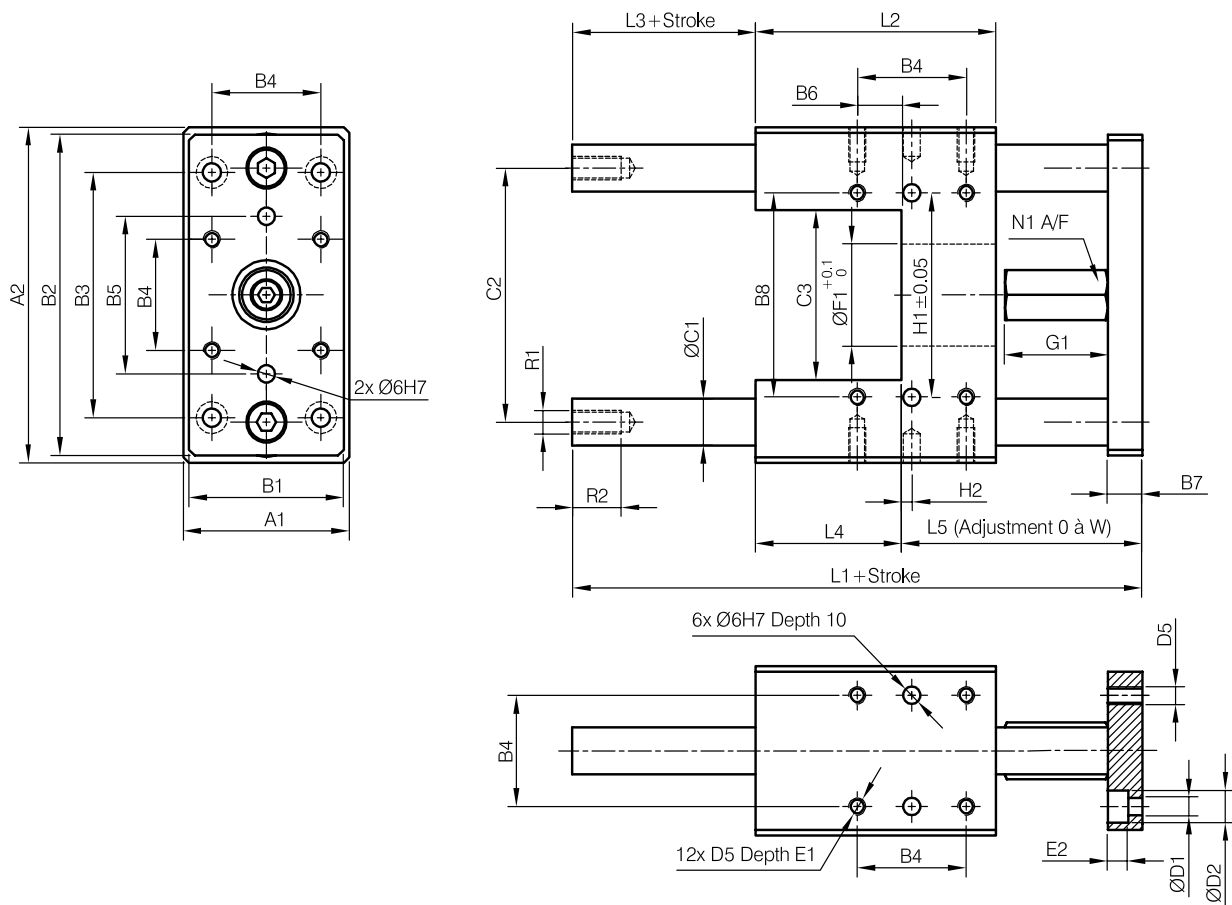
#### Maximum permissible torque (Nm)





# Rod guidance Units for Ø 32 to 100 mm ISO cylinders

## Dimensions "U" style Rod guidance Units



| Ø   | A1  | A2  | B1  | B2  | B3  | B4   | B5  | B6   | B7 | B8  | C1 | C2    | C3  | D1  | D2 | D5  | E1 | E2 | F1 |
|-----|-----|-----|-----|-----|-----|------|-----|------|----|-----|----|-------|-----|-----|----|-----|----|----|----|
| 32  | 50  | 97  | 45  | 90  | 78  | 32,5 | 50  | 18   | 12 | 61  | 12 | 73,5  | 50  | 6,6 | 11 | M6  | 12 | 7  | 30 |
| 40  | 58  | 115 | 54  | 110 | 84  | 38   | 54  | 15,5 | 12 | 70  | 16 | 86,5  | 58  | 6,6 | 11 | M6  | 12 | 7  | 35 |
| 50  | 70  | 137 | 63  | 130 | 100 | 46,5 | 72  | 19,5 | 15 | 85  | 20 | 103,5 | 70  | 9   | 14 | M8  | 16 | 9  | 40 |
| 63  | 85  | 152 | 80  | 145 | 105 | 56,5 | 82  | 29,5 | 15 | 100 | 20 | 118,5 | 85  | 9   | 14 | M8  | 16 | 9  | 45 |
| 80  | 105 | 189 | 100 | 180 | 130 | 72   | 106 | 39   | 20 | 130 | 25 | 147   | 105 | 11  | 17 | M10 | 16 | 11 | 45 |
| 100 | 130 | 213 | 120 | 200 | 150 | 89   | 131 | 53   | 20 | 150 | 25 | 171,5 | 130 | 11  | 17 | M10 | 16 | 11 | 55 |

| Ø   | G1 | L1  | L2  | L3  | L4  | L5    | N1 | R1  | R2 | H1  | H2   | W |
|-----|----|-----|-----|-----|-----|-------|----|-----|----|-----|------|---|
| 32  | 30 | 134 | 72  | 15  | 44  | 75    | 17 | M6  | 11 | 61  | 1,75 | 2 |
| 40  | 36 | 150 | 84  | 13  | 51  | 86    | 17 | M8  | 12 | 70  | 3,5  | 2 |
| 50  | 42 | 175 | 100 | 12  | 60  | 103   | 24 | M8  | 12 | 85  | 3,75 | 4 |
| 63  | 42 | 190 | 115 | 12  | 75  | 103   | 24 | M8  | 12 | 100 | 1,25 | 4 |
| 80  | 49 | 238 | 160 | 1   | 111 | 126   | 30 | M10 | 16 | 130 | 3,25 | 6 |
| 100 | 49 | 249 | 165 | 7,5 | 110 | 131,5 | 30 | M10 | 16 | 150 | 8,5  | 6 |

## Order codes and weights of "U" style Rod guidance Units

| Ø   | Order code plain bearings | Maxi stroke | Weights(kg) |                |
|-----|---------------------------|-------------|-------------|----------------|
|     |                           |             | 0mm stroke  | per 10mm extra |
| 32  | <b>P1E-4KRK-XXXX</b>      | 2000 mm     | 0,970       | 0,018          |
| 40  | <b>P1E-4LRK-XXXX</b>      | 2000 mm     | 1,550       | 0,315          |
| 50  | <b>P1E-4MRK-XXXX</b>      | 2000 mm     | 2,560       | 0,493          |
| 63  | <b>P1E-4NRK-XXXX</b>      | 2000 mm     | 3,570       | 0,493          |
| 80  | <b>P1E-4PRK-XXXX</b>      | 2000 mm     | 6,530       | 0,770          |
| 100 | <b>P1E-4QRK-XXXX</b>      | 2000 mm     | 8,760       | 0,770          |



